

RemoteExec Getting started guide Version 5

For additional information, please contact IS Decisions at one of the following:

 **+335.59.41.42.20**
Phone

 **+335.59.41.42.21**
Fax

 **www.isdecisions.com**
Web

 **info@isdecisions.com**
Email

Table of content

1. GENERAL	3
1.1. OVERVIEW.....	3
1.2. REQUIREMENTS	3
1.3. INSTALL REMOTEEXEC.....	3
2. FIRST REMOTE EXECUTION	5
2.1. DOWNLOAD ACROBAT READER	5
2.2. CONFIGURE THE REMOTE ACTION	5
2.3. SELECT TARGET COMPUTERS	6
2.4. LAUNCH THE EXECUTION.....	7
2.5. SEE THE RESULT	8
2.5.1. <i>In the result window</i>	8
2.5.2. <i>In a printable report</i>	9
2.5.3. <i>Display statistics</i>	10
3. SCHEDULE NEW ATTEMPTS	12
3.1. CREATE THE TASK	12
3.2. CONFIGURE THE SCHEDULED TASK.....	12
3.3. SEE THE RESULT THE NEXT DAY	14
3.4. DISPLAY REMOTE JOB STATISTICS	15
4. AUTOMATED REPORTS.....	16
4.1. CONFIGURE A REPORT	16
4.2. SCHEDULE THE REPORT.....	16
4.3. CONFIGURE FILES TO BE GENERATED	17
4.4. ADD OTHER REPORTS	17
4.5. SEND REPORT FILES BY E-MAIL	18
4.6. THE DEPLOYMENT IS DONE.....	19
5. SAVE IN MY REMOTE ACTIONS	20
6. CONCLUSION	21

For additional information, please contact IS Decisions at one of the following:

1. General

1.1. Overview

RemoteExec allows administrators **to run programs remotely**. This is useful to deploy applications and update computers in *Windows* network.

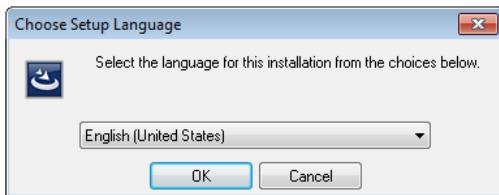
1.2. Requirements

- **Administration console:** Windows 2000/XP/2003/Vista/2008/7/2008 R2
The *Service pack 4* and *MDAC 2.6* are required for Windows 2000.
- **Target computers:** Windows 2000/XP/2003/Vista/2008/7/2008 R2 (no *Service pack* requirement)
- **Remote execution requirements:** The account running *RemoteExec* needs administrative rights on target computers and *Microsoft file and printer sharing (SMB TCP 445)* and *ICMP (ping)* should be enabled. These protocols also need to be allowed in any firewall between the administration console and target computers.

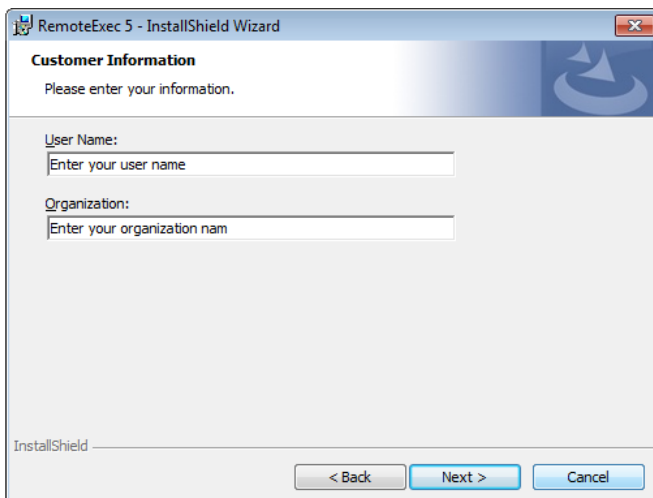
1.3. Install RemoteExec

The installation package *RemoteExec_x86.exe* is available on [IS Decisions website](#). Just run this package to launch the installation wizard and follow the different steps.

- Choose your language preference.

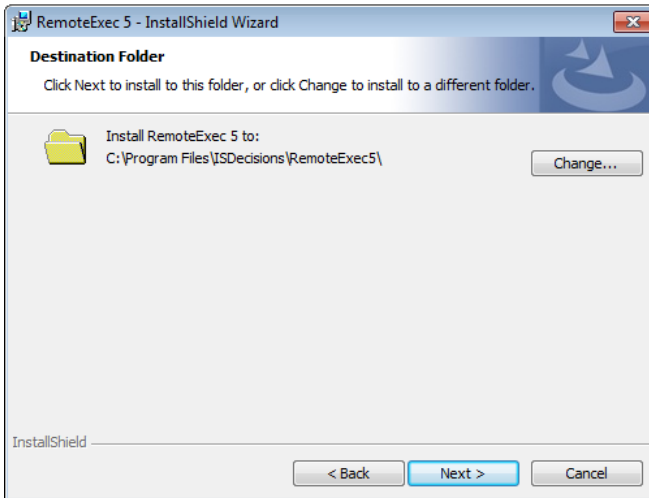


- Click *Next* on the *Welcome* tab.
- Accept the *License Agreement* after having read it.
- Enter your user/customer information and click on *Next*.

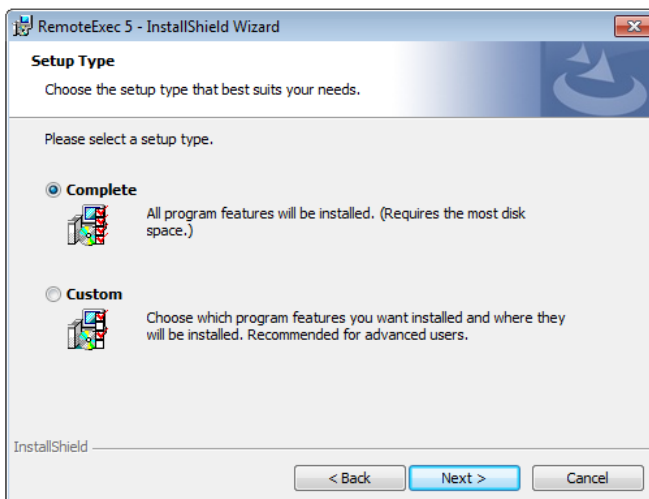


For additional information, please contact IS Decisions at one of the following:

- Select the installation folder path and click on *Next*.

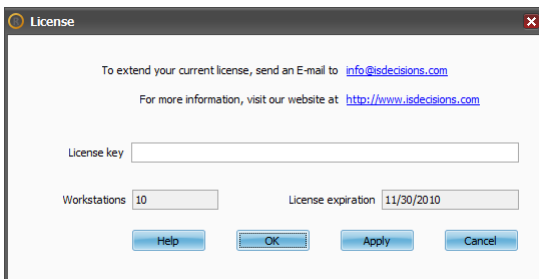


- You can choose a *Complete (Program + Documentations)* or a *Custom* installation. We advise you to select a *Complete* installation to begin as the documentation will be installed too. Click on *Next*.



- A last tab informs you *RemoteExec* is ready to be installed. Click on *Install* button.
- *RemoteExec* is now installed and ready to run. Click on *Finish* to launch *RemoteExec Console*.

Once installed, *RemoteExec* and his documentation are accessible through *Windows Start* menu. By default *RemoteExec* is installed in *Evaluation mode*. To register your license, click on *Tools* menu then *License...* and copy/paste the *serial* delivered by our [sales department](#).



There is nothing more to install on target computers:

- **No agent.**
- **No client program.**
- **A default database is available and preset.**

2. First remote execution

For your first remote execution, we will show you how to deploy *Acrobat Reader (version 9.4)* with *RemoteExec*. The *Filter* section is not used in this example.

2.1. Download Acrobat Reader

Download the full package of *Acrobat Reader* from the [Adobe web site](#). The name of the file is *AdbRdr940_en_US.exe*.

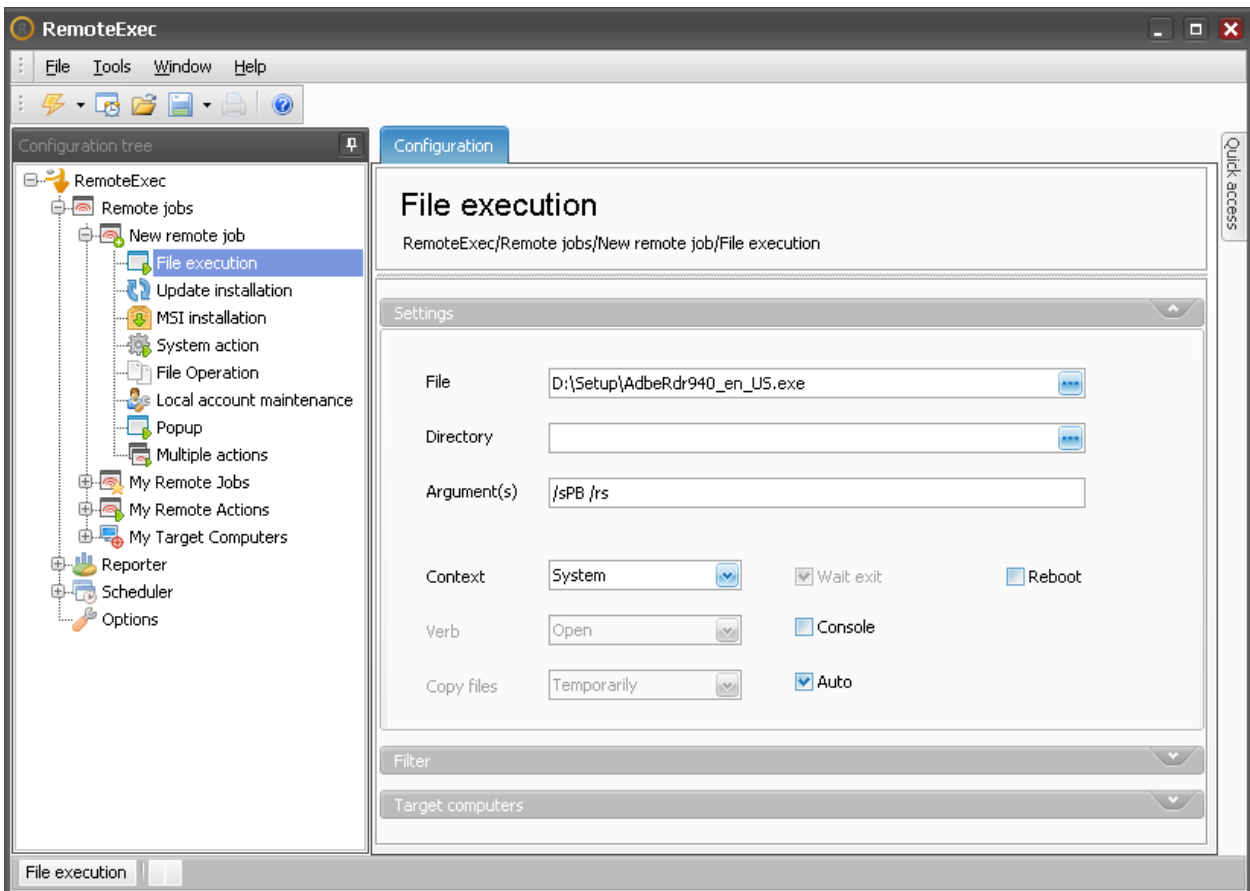
2.2. Configure the Remote Action

Open *RemoteExec* and in the *Configuration tree* go to *Remote Jobs/New Remote Job/File execution*. The main tab in the central windows (*Configuration* tab) is composed of three sections:

- *Settings* which allows you to enter all the *Remote Action* parameters.
- *Filter* to select different criteria to filter the computers with specific requirements/properties.
- *Target computers* to choose the machine where you want to remotely execute the configured *Action*.

In the first section named *Settings* select the installation package of *Acrobat Reader* as the file to execute. You also need to specify arguments to make the installation package run **silently**. By default this package is interactive and prompts a wizard which requests filling in information fields. Without the correct arguments, the remote execution would hang on target computers waiting for this information to continue.

For this particular package (*Acrobat Reader 9.4*) the arguments to run the installation silently are *"/sPB /rs"*. In general, you can find these parameters in the documentation of the software you want to deploy. Leave the *Administrative* context option selected and make sure that the *Auto* option is selected too in order to automatically optimize some settings.

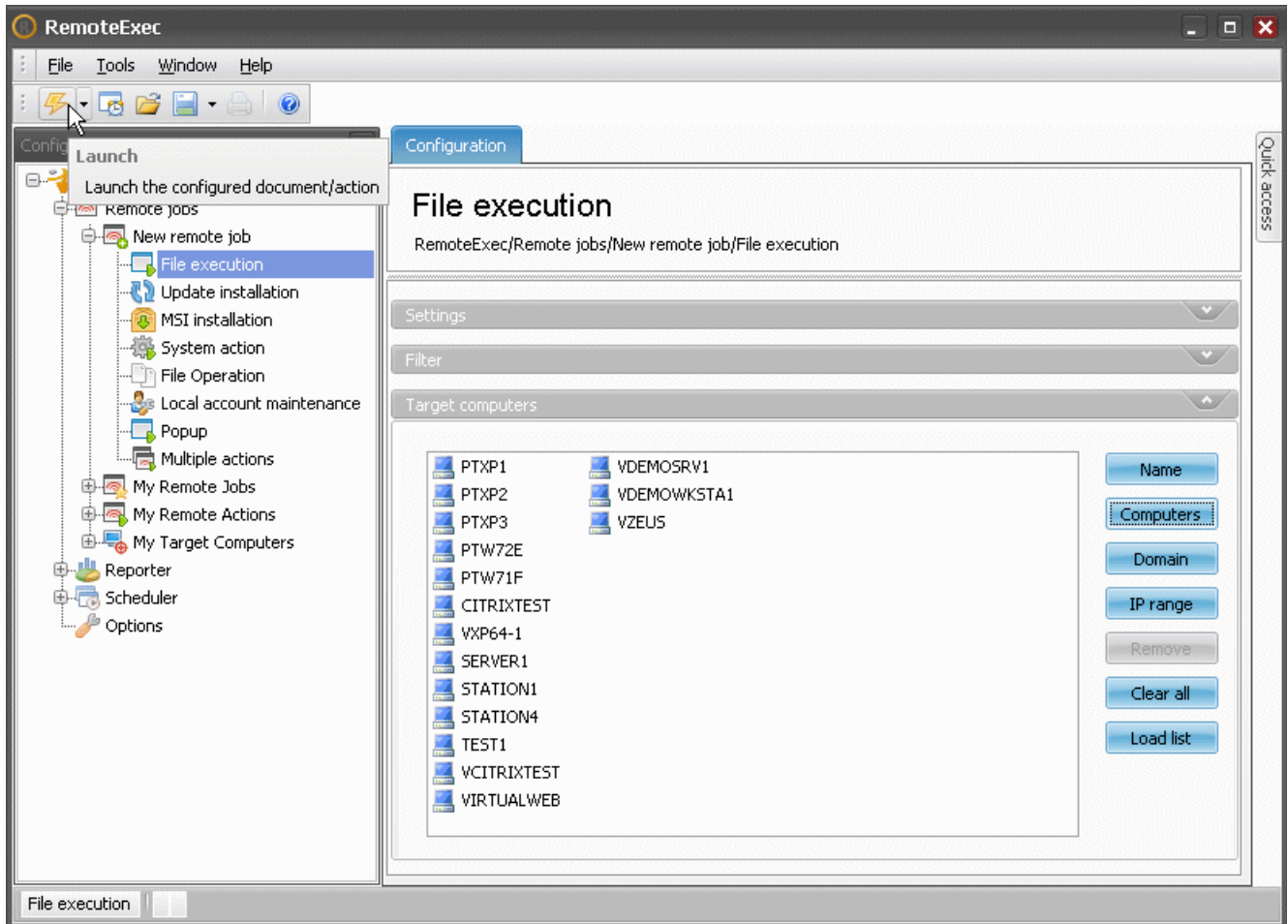


For additional information, please contact IS Decisions at one of the following:

2.3. Select Target computers

The action to execute remotely is now configured and you need to select *Target computers* in the third section. You can either:

- Enter computer names or *IP addresses* one by one.
- Select them through the *Browser*.
- Type an *IP range*.
- Select a whole *Domain* or *Organizational Unit* to build the computer list dynamically at run time.
- Mix all the selection methods to obtain your *Target computers* list.

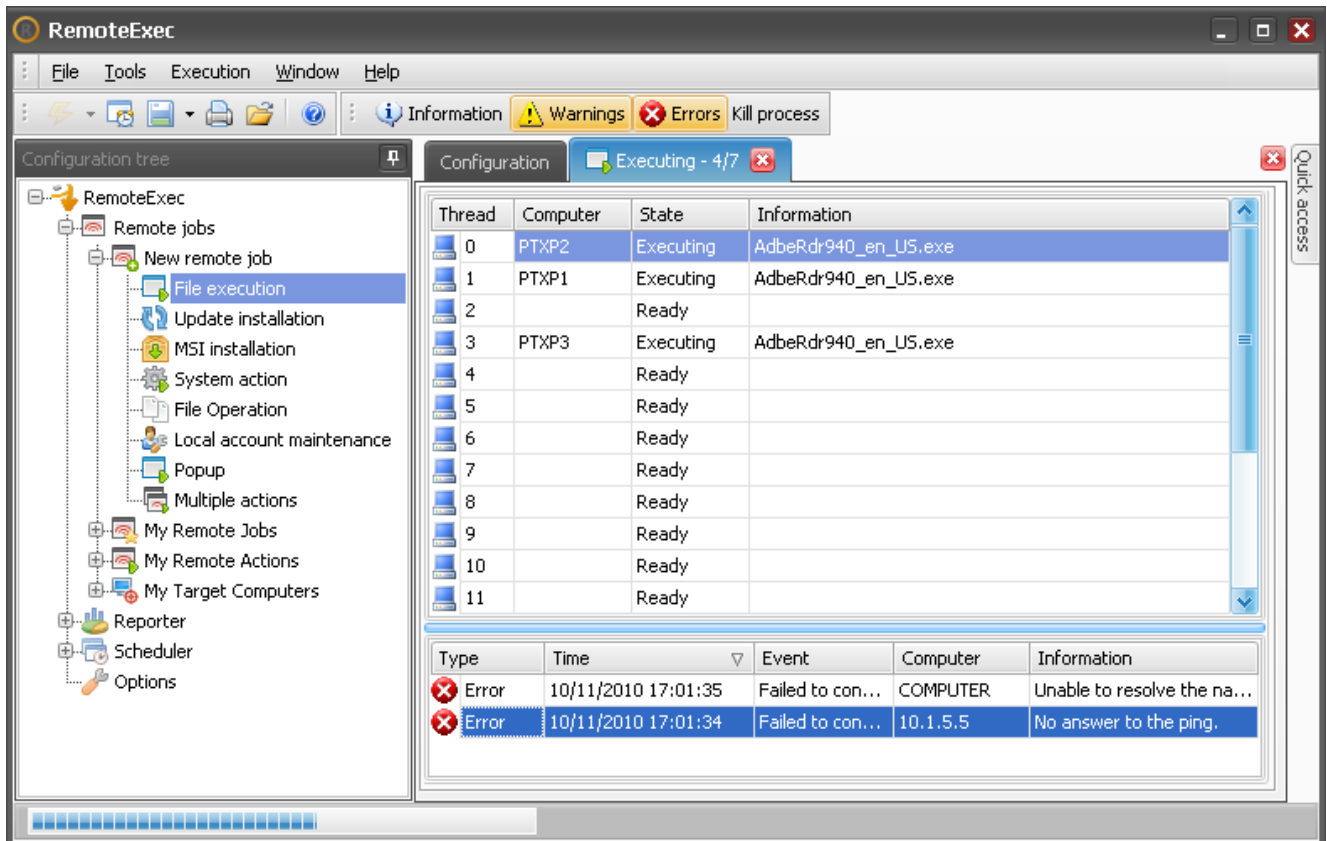


For additional information, please contact IS Decisions at one of the following:

2.4. Launch the execution

The *Remote Job* is now configured. You just need to click on the *Launch* button in the tool bar to start the execution.

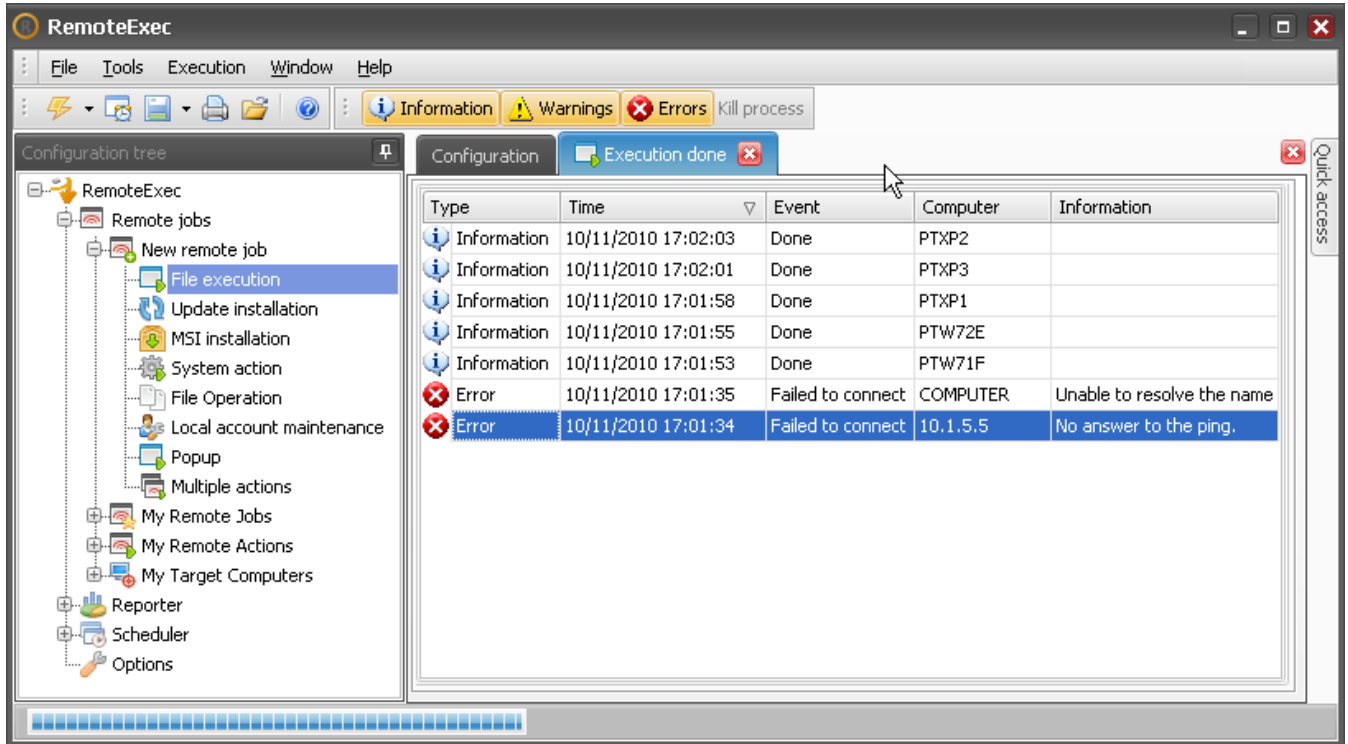
A new tab is opened with the progress window. The upper section of the progress window shows the remote execution threads. In the lower section, all result events can be displayed once an execution is completed on a computer. By default only error and warning events are displayed but you can personalize this in the tool bar.



2.5. See the result

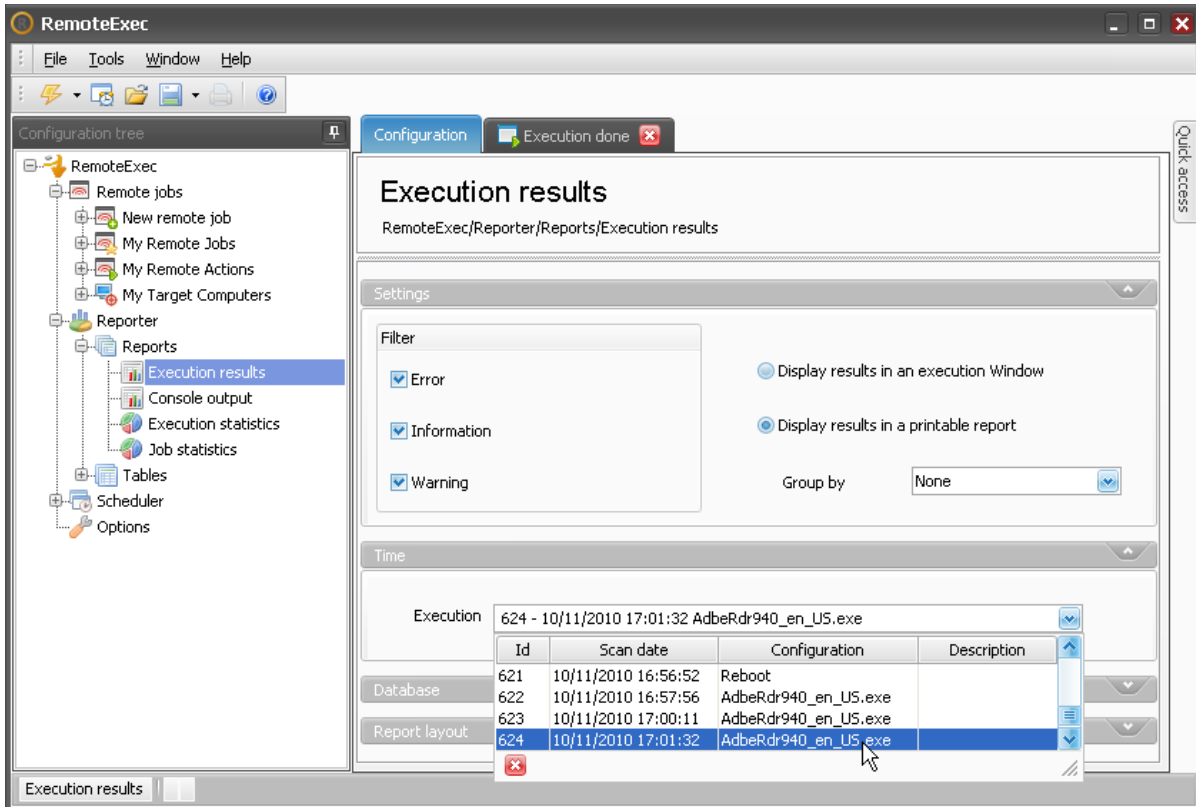
2.5.1. In the result window

Once the remote execution is done the progress window either completely disappears if the execution was successful on all target computers or the lower section of the progress window stays in view. In this case you can take a look at all error and warning events to understand why the *Remote Job* was not successfully executed on some target computers.



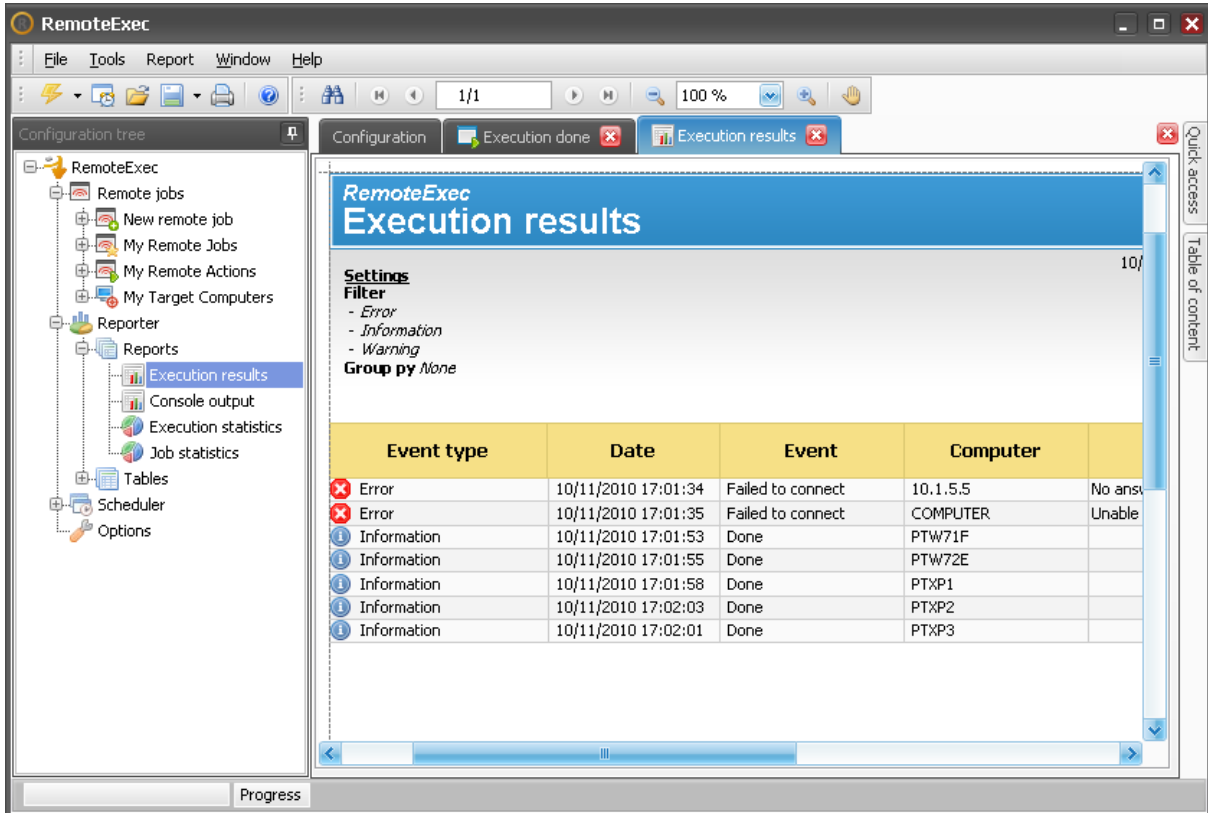
2.5.2. In a printable report

You can also display a printable report of the execution result by going to “Reporter/Reports/Execution results” in the Configuration tree. Then in the first section Settings select “Display results in a printable report” and in the second section Time, select the execution that was just done.



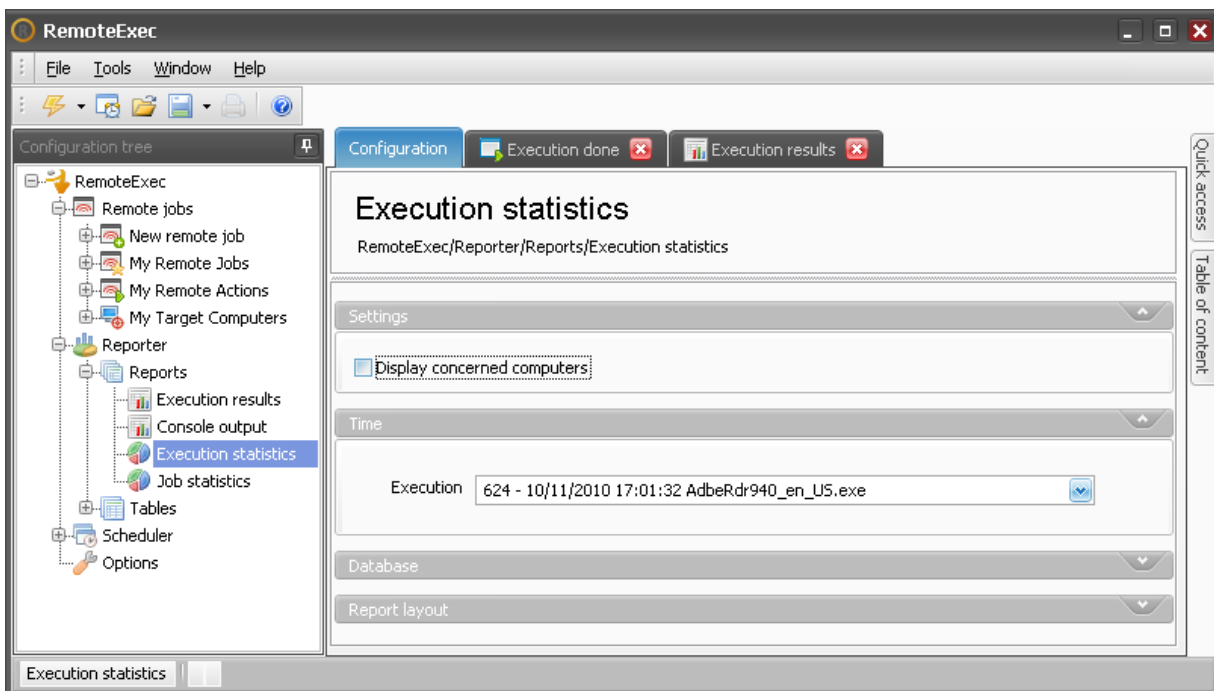
The report is now configured and you can click on the *Launch* button in the tool bar to display it.

The report is then displayed in a new tab. You can print it and save it in different formats.



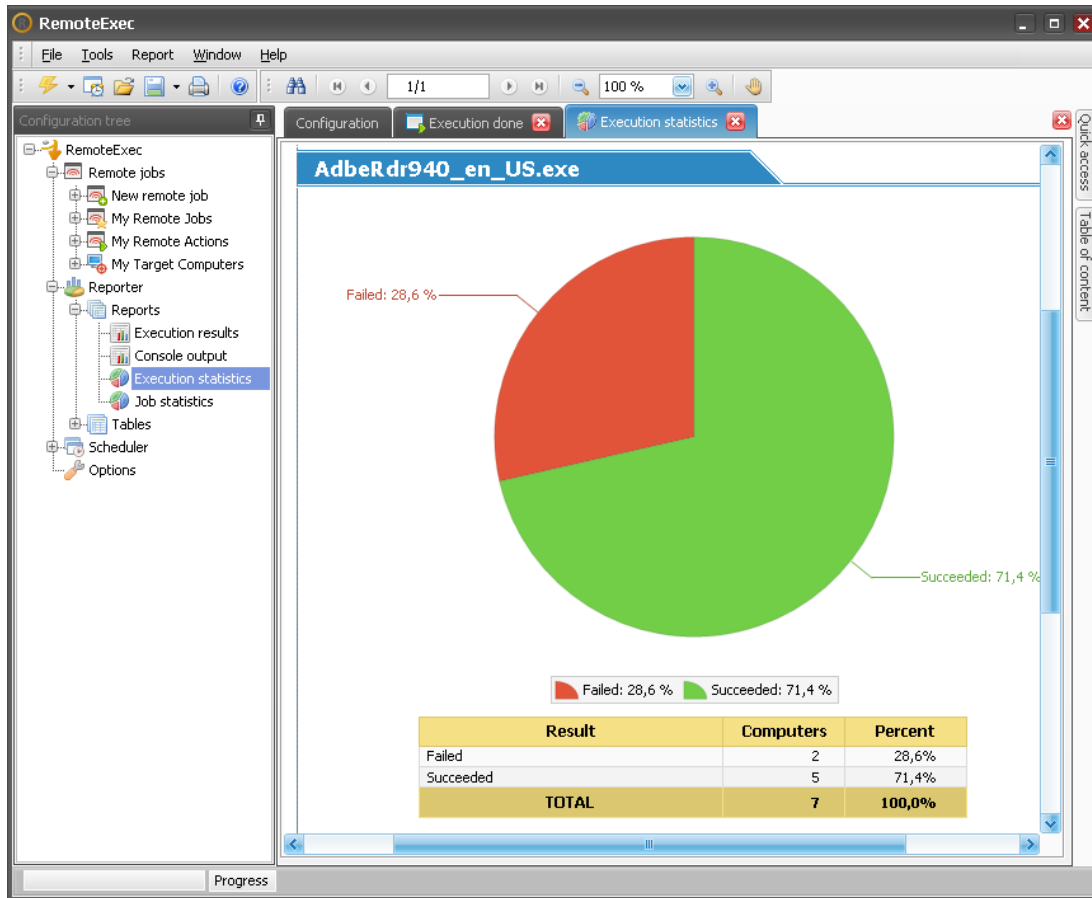
2.5.3. Display statistics

In the same way you can display statistics with the *Execution statistics* report.



For additional information, please contact IS Decisions at one of the following:

This report displays a pie chart with the number of computers for which the execution failed and the number of computers for which the execution succeeded.

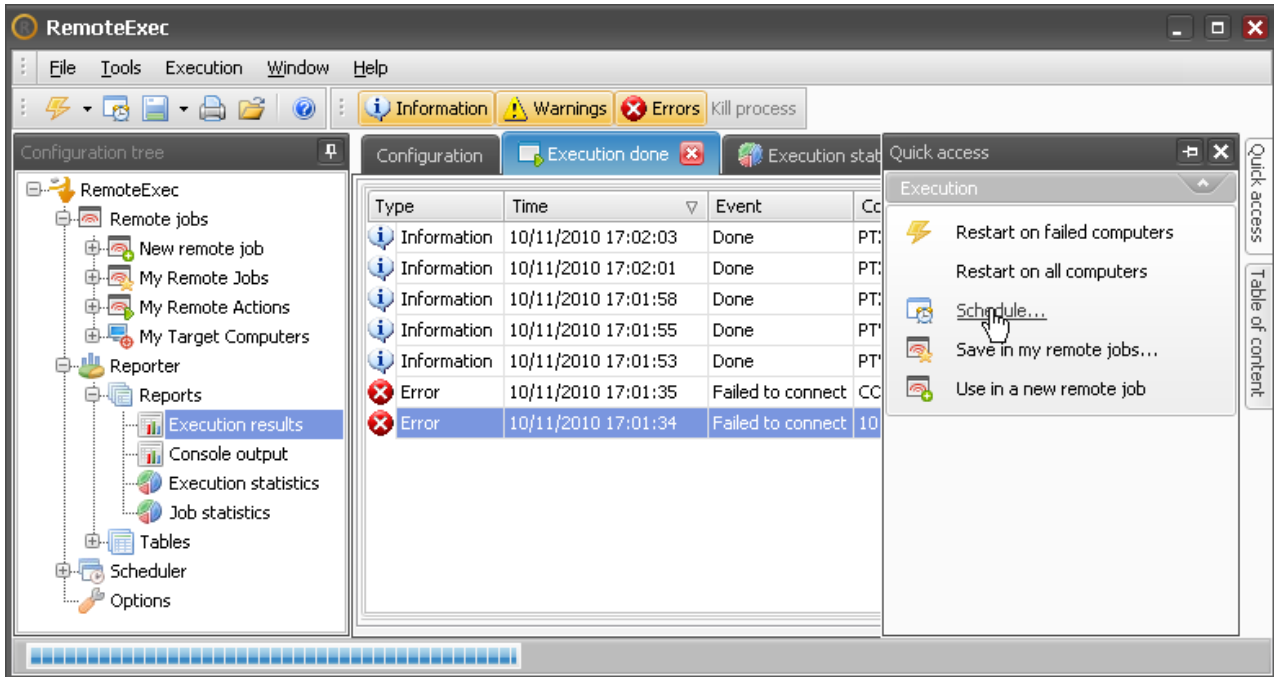


For additional information, please contact IS Decisions at one of the following:

3. Schedule new attempts

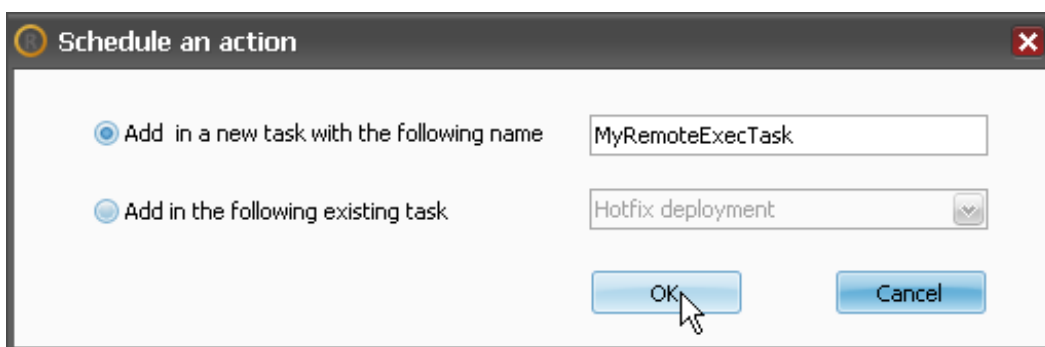
3.1. Create the task

Some computers were unavailable during the first execution so you may want to schedule new attempts. To do this *Remote Job* again, go to the result window that was left open since the execution was terminated and click on the *Schedule* button in the *Quick access* panel or in the tool bar.

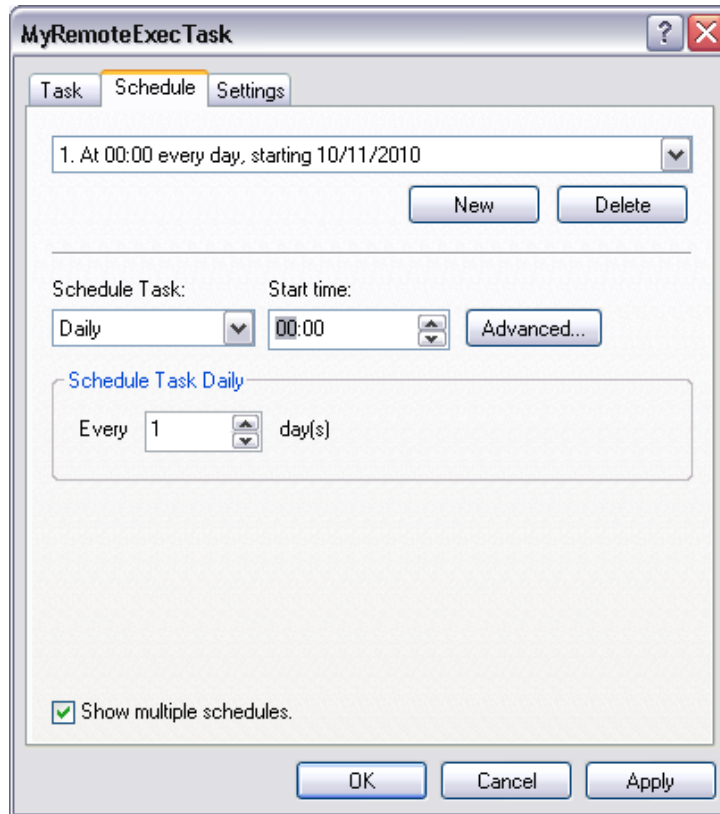


3.2. Configure the Scheduled Task

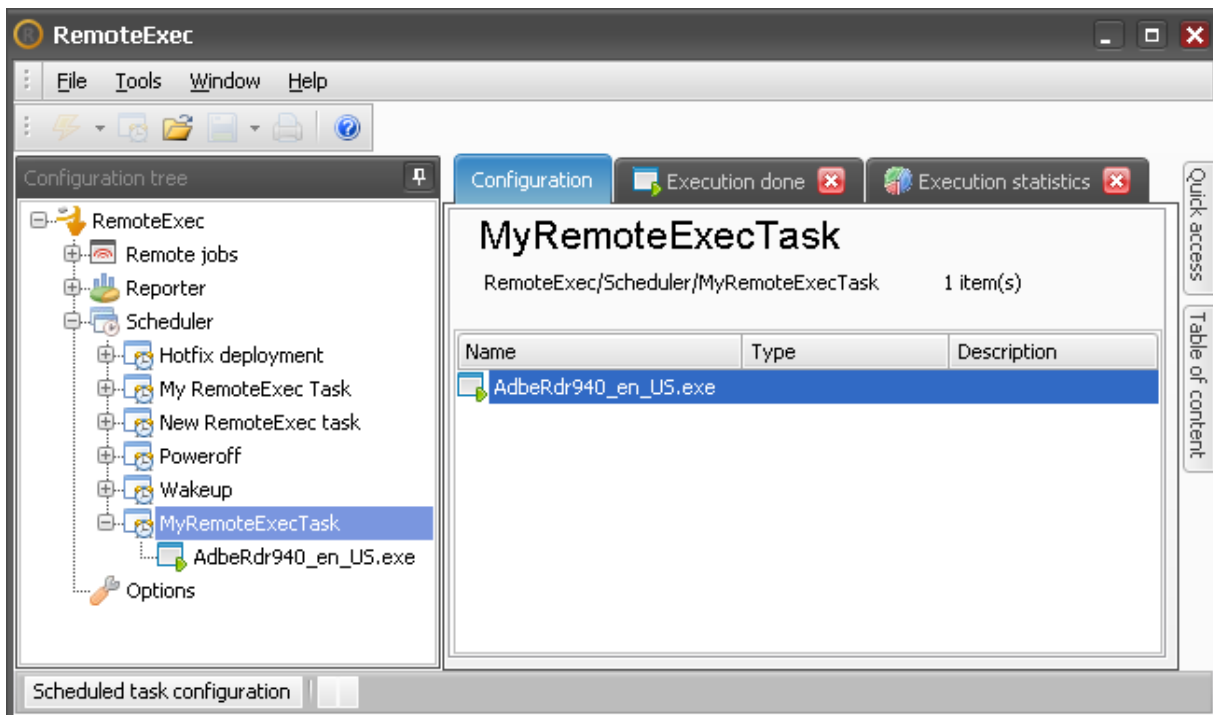
You are prompted to choose a name for this *Scheduled Task*. Type an appropriated name and click *OK*.



You are then prompted to enter standard *Windows Task* settings. Be sure to fill in the *Schedule* tab to launch the task.

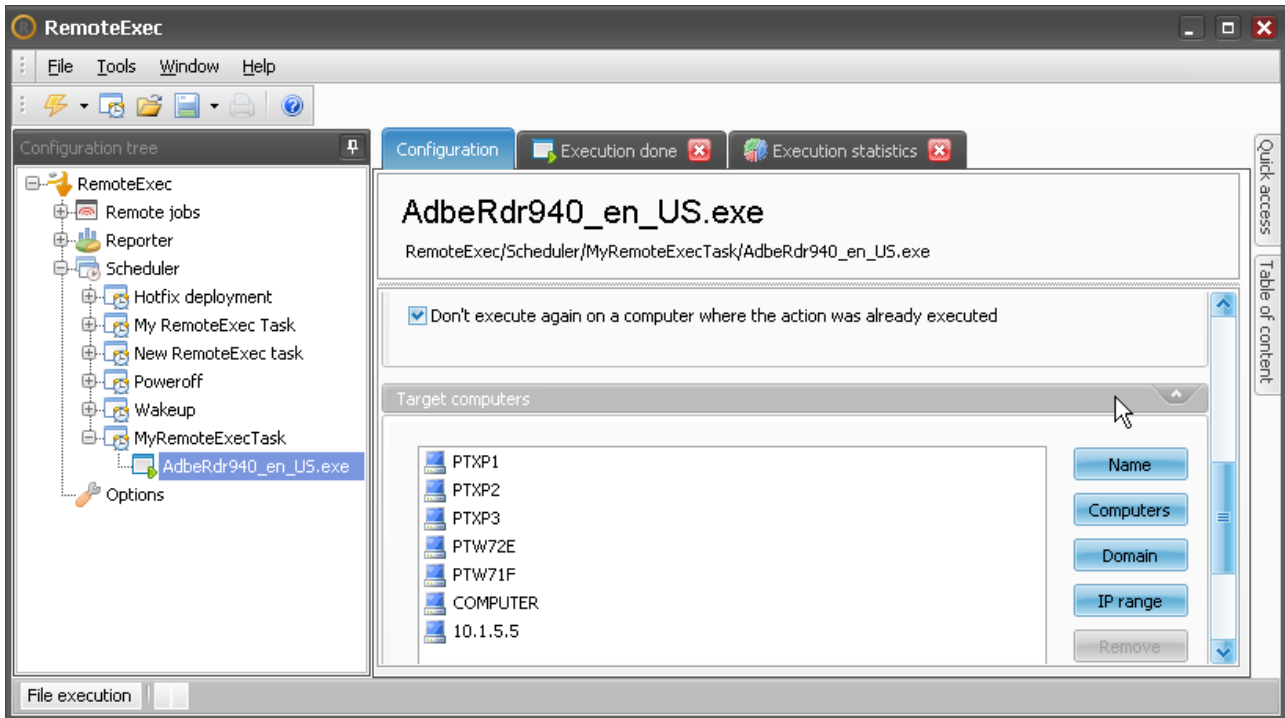


Once the schedule has been configured, click *OK*. You see that a new *Scheduled Task* has been added with the *Remote Job* that installs *Acrobat Reader* in it.



For additional information, please contact IS Decisions at one of the following:

The *Remote Job* was automatically set with the filter option “*Don't execute again on a computer where the action was already executed*”. So even if several execution attempts have been scheduled, the installation of *Acrobat Reader* **will be executed only once on each computer**.

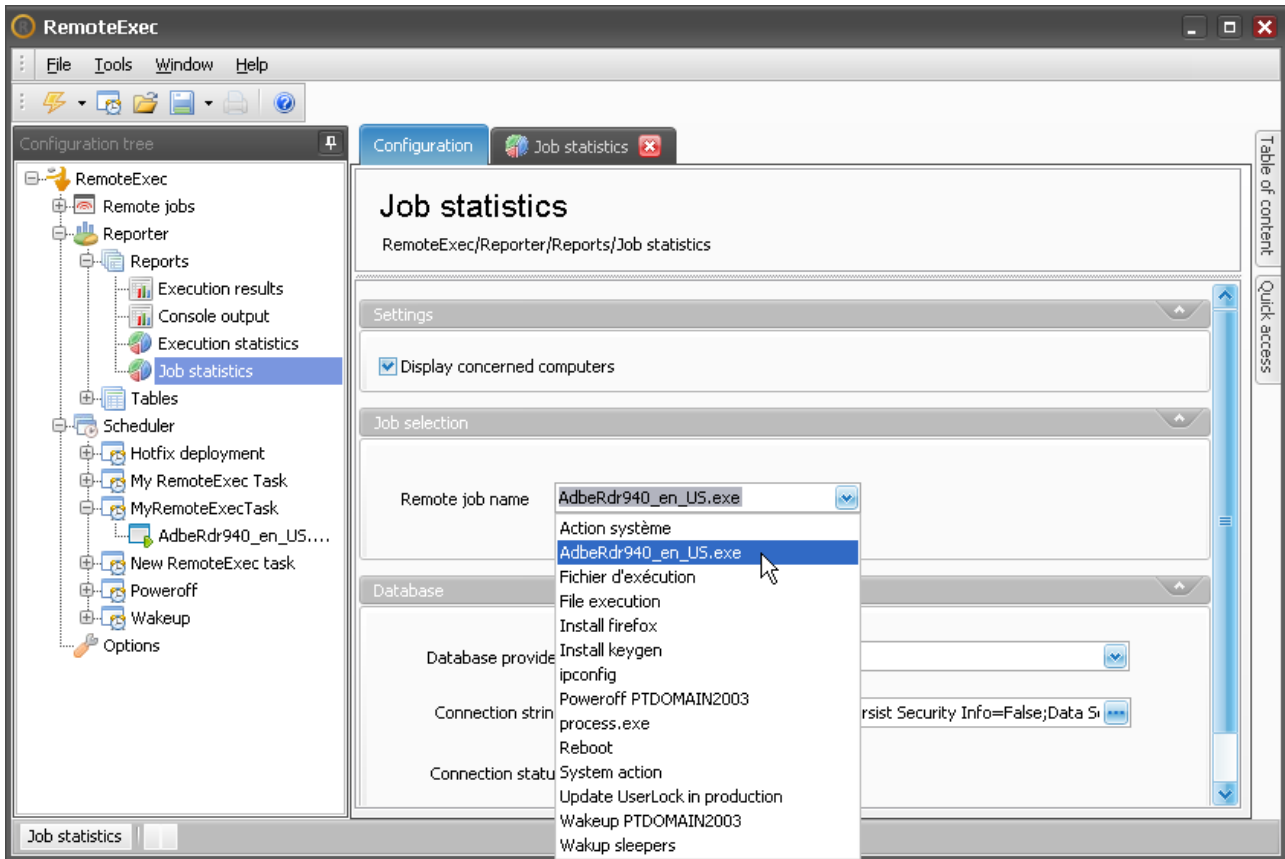


3.3. See the result the next day

As in paragraph 2.5.2 and 2.5.3 you can display reports generated on the scheduled remote execution.

3.4. Display Remote Job statistics

Since the *Remote Job* has been named (*AdbRdr940_en_US.exe* in our example) you can now display cumulative results for this *Job* after several scheduled attempts by using the *Job statistics report*.



With this report, only computers for which the *Remote Action* has never executed are in the *Failed* status. Computers for which the *Remote Action* was executed at least once get the *Succeeded* status.

4. Automated reports

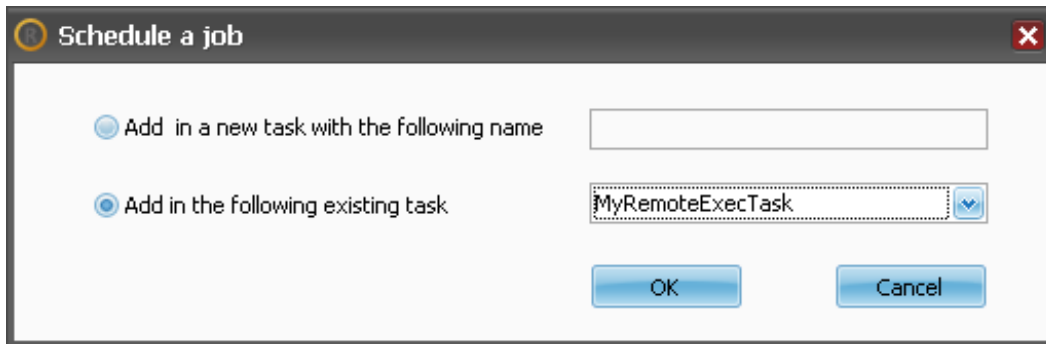
You may want to **get all these reports automatically by E-mail** each time a scheduled attempt has been done. To do this, follow the steps below.

4.1. Configure a report

Configure the report you want to generate automatically as if you wanted to display it. When you schedule a report, if you select the latest execution, the report will always be generated for the latest execution.

4.2. Schedule the report

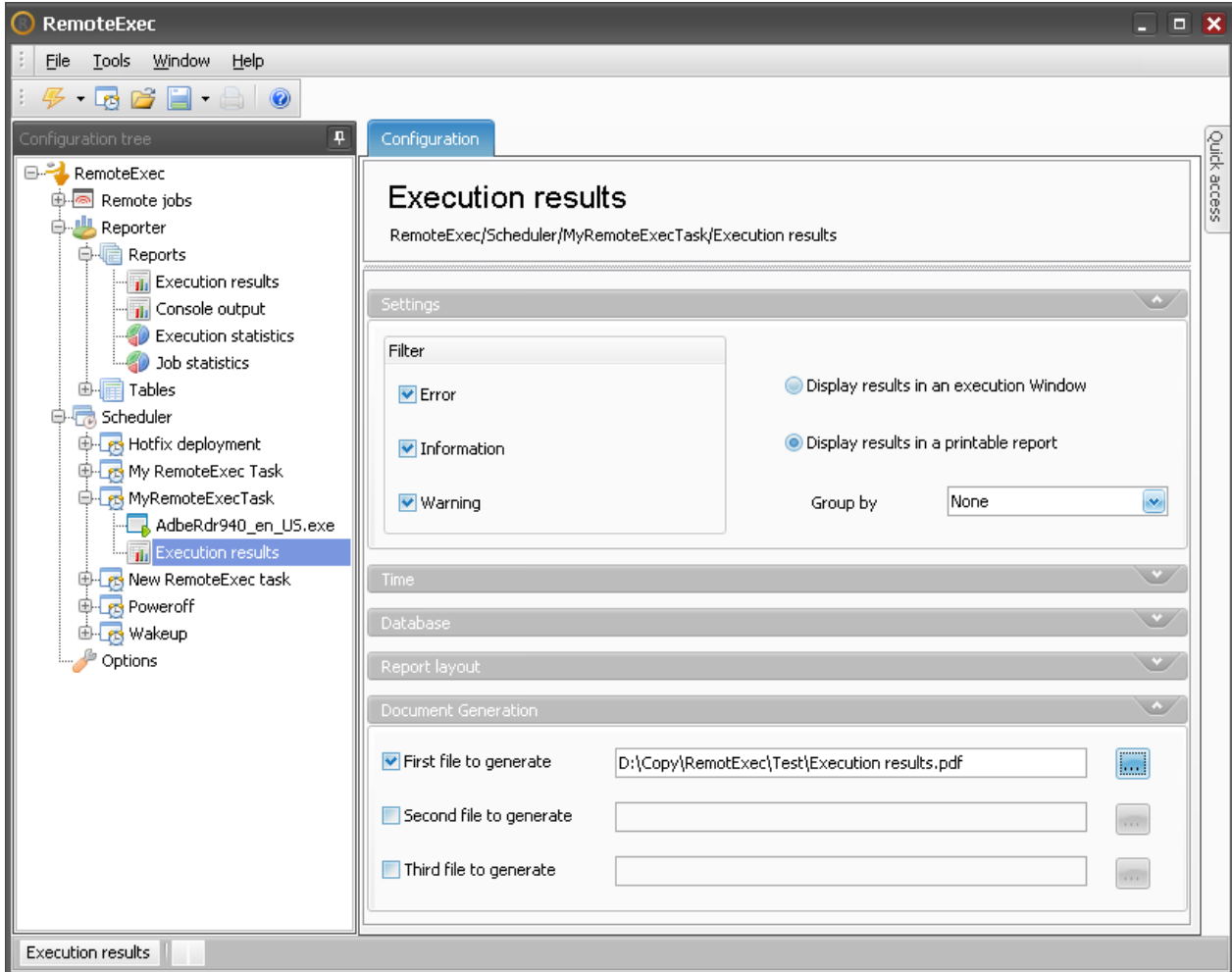
The report is now configured, click on the *Schedule* button in the tool bar and you are prompted to select a task. Select the task that has been created previously to install *Acrobat Reader*.



For additional information, please contact IS Decisions at one of the following:

4.3. Configure files to be generated

You see that the report has been added after the installation of *Acrobat Reader* in the *Scheduled Task*. A new section named “*Document generation*” is available to specify the output files. Select a *PDF* file to be generated in an existing folder. Make sure that the account running the task has write access to this folder.

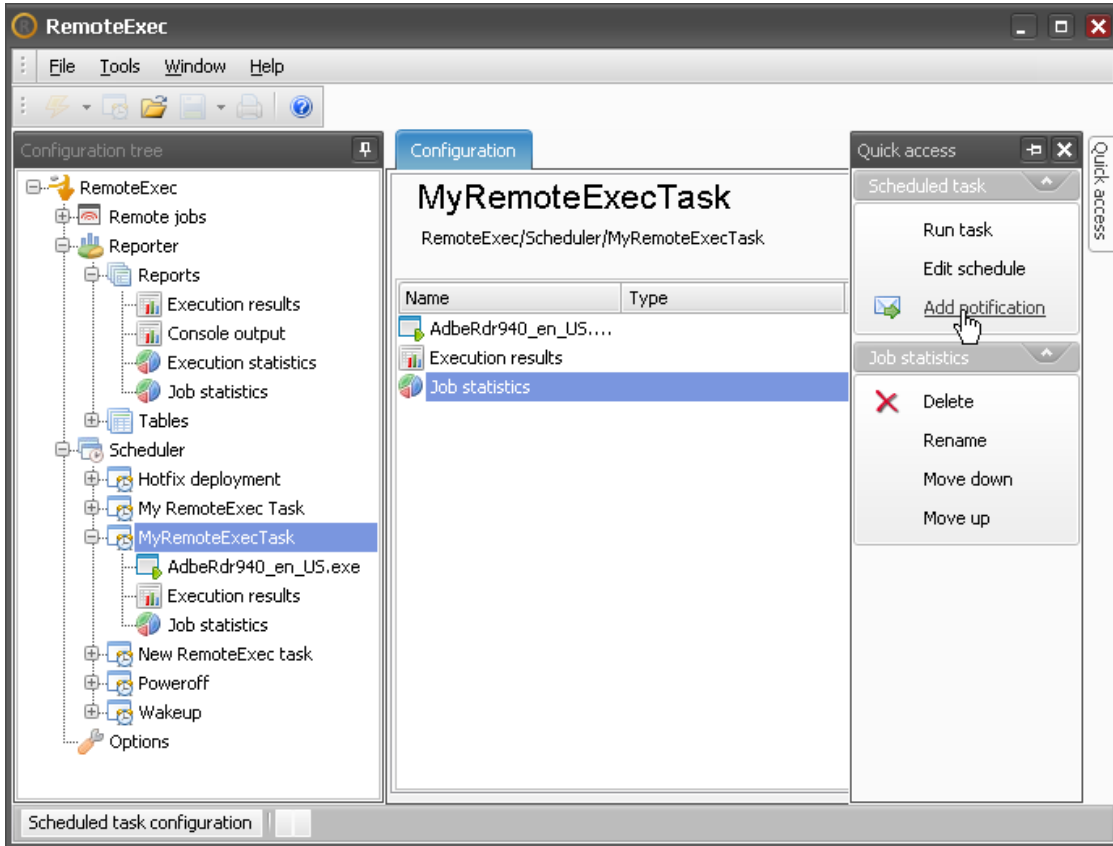


4.4. Add other reports

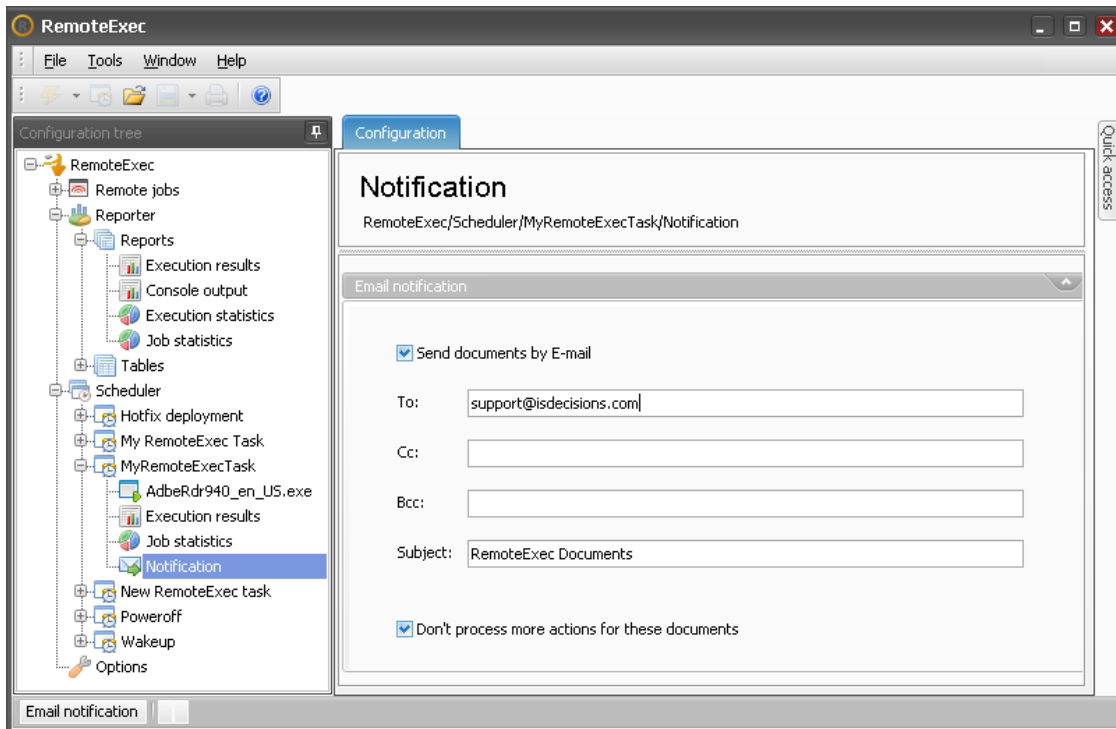
You can add other reports to be generated in the *Scheduled Task* by repeating paragraph 4.1 to 4.3. You can add for example the *Job statistics* report.

4.5. Send report files by E-mail

When the *Scheduled Task* is selected, click on *Add notification* in the *Quick access* panel.

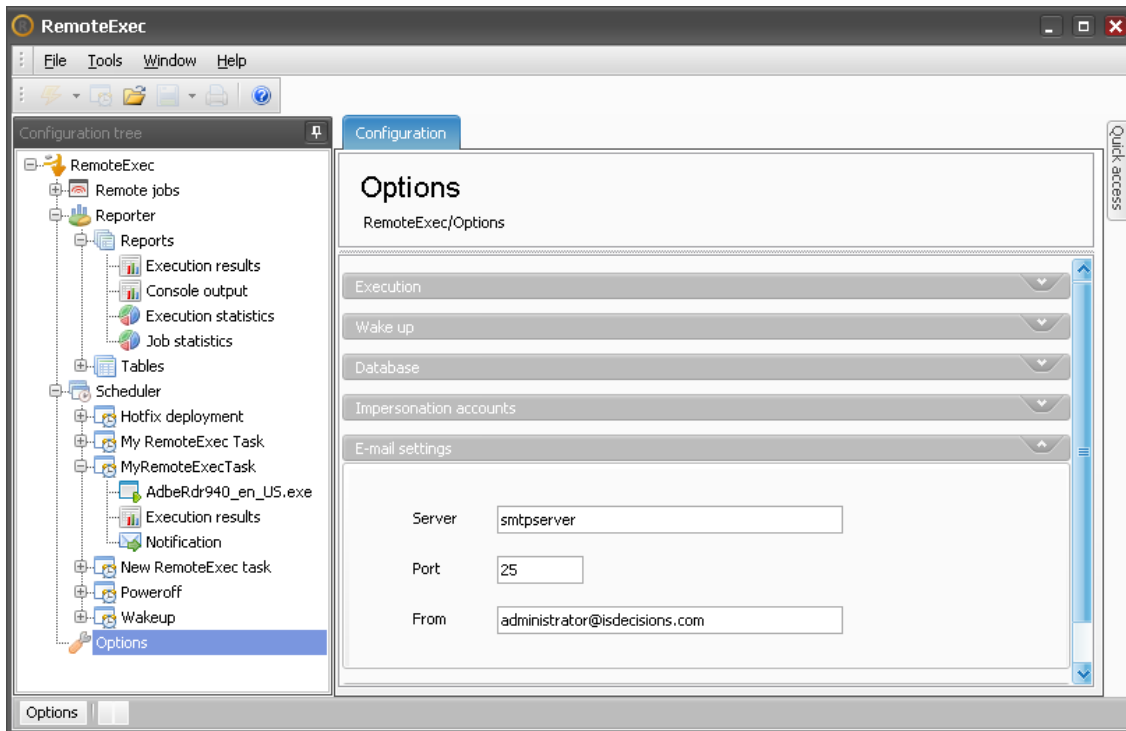


A *Notification* is added after the report generation and you can configure it by specifying an E-mail recipient.



For additional information, please contact IS Decisions at one of the following:

When this is done, you also need to configure *SMTP settings* in the *Options*.



The automatic report generation is ready. Just wait until the next scheduled installation attempt of *Acrobat Reader* to get the reports in your email box.

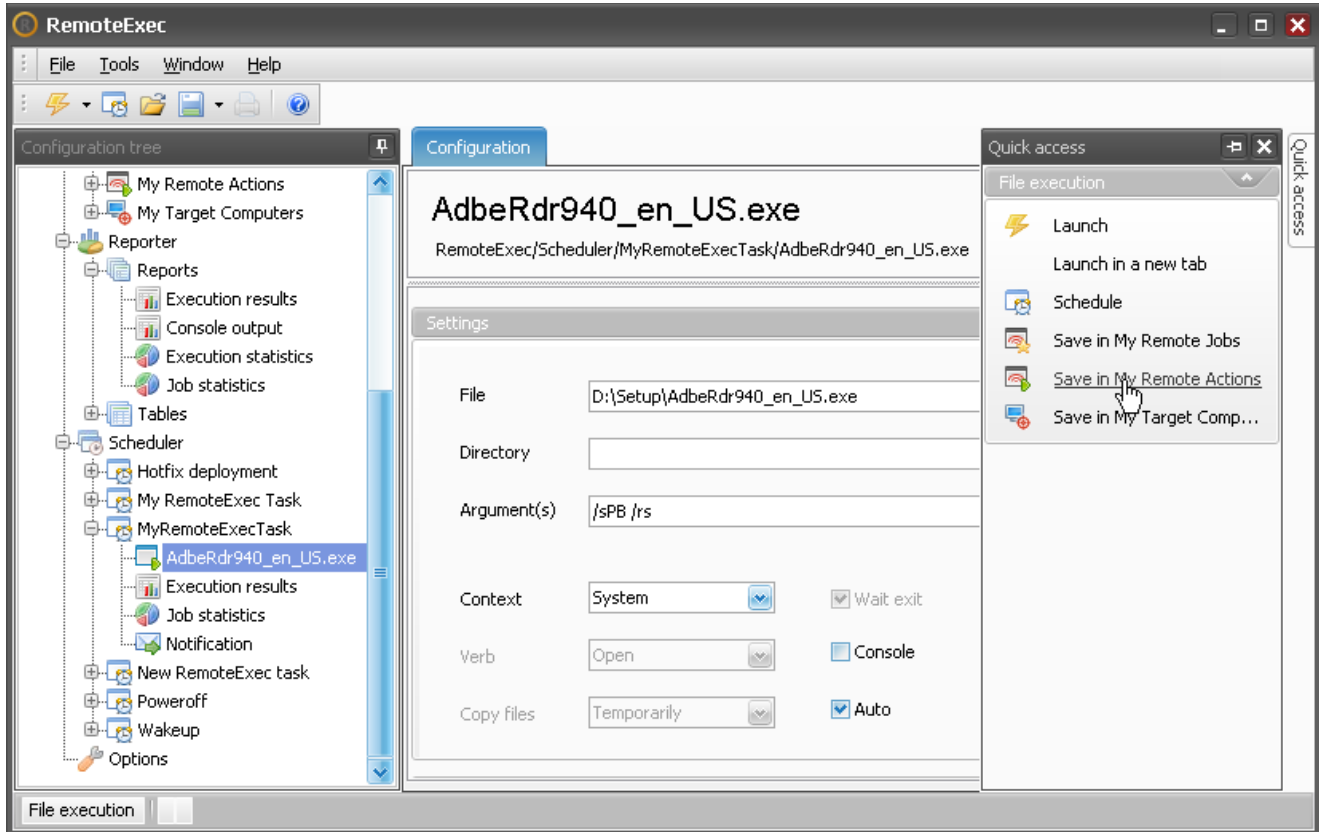
4.6. The deployment is done

Once the pie chart in the *Job statistics* report only displays successful computers *Acrobat Reader* is installed on all target computers and you can delete the *Scheduled Task* but alternatively you can also keep it and add regularly new computers in the *Target computer* list.

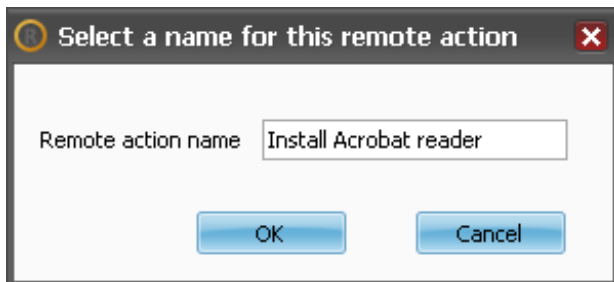
5. Save in My Remote Actions

Another way to manage new computers is to keep this *Remote Action* in your favorites (*My Remote Actions*) allowing you to reuse it later on new computers and **do on demand deployment of Acrobat Reader**.

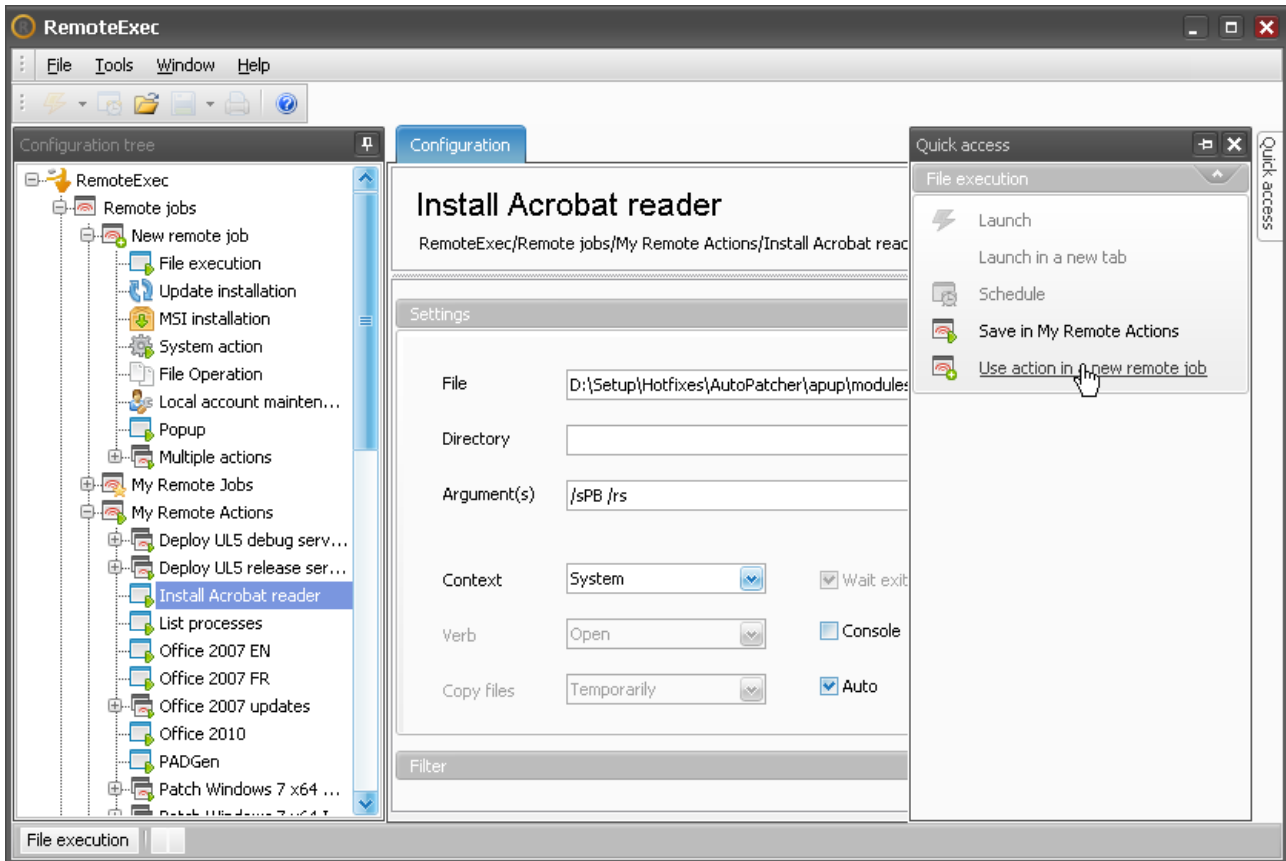
Select the *Remote Job* in the *Scheduled Task* and in the *Quick access* panel click on “*Save in My Remote Actions*”.



You are then prompted to give a name to the *Remote Action*.



The *Remote Action* shows up in the folder “*My Remote Actions*” without the list of *Target computers*. Later if you want to install *Acrobat Reader* on a new computer, select the *Remote Action* and click on “*Use in new Remote Job*” in the *Quick access* panel. You can specify the new computers on which you want to deploy *Acrobat Reader* and start the execution.



6. Conclusion

This was a short example to show you quickly how to use the main features of *RemoteExec*. For more information on how to use *RemoteExec* please read the [help](#).

We have provided additional deployment examples in the *Example of use* section of the online documentation.