

What's new in RemoteExec 5?

The help file of *RemoteExec 5* is not yet updated so in the mean time, take a look at this quick reference of all new features in *RemoteExec 5*.

1. NEW TABBED INTERFACE.....	2
1.1. GENERAL.....	2
1.2. REMOTE ACTIONS.....	3
1.3. REMOTE JOBS.....	4
1.4. TARGET COMPUTERS.....	5
1.5. REMOTE EXECUTIONS.....	6
2. REPORTING.....	7
3. A NEW TYPE OF REMOTE ACTION.....	9
4. SCHEDULER.....	10
5. INTERNALS.....	12

For additional information, please contact IS Decisions at one of the following:

1. New Tabbed interface

1.1. General

- RemoteExec 5 uses a **new tabbed interface** like the other IS Decisions products WinReporter 4 and UserLock 5.

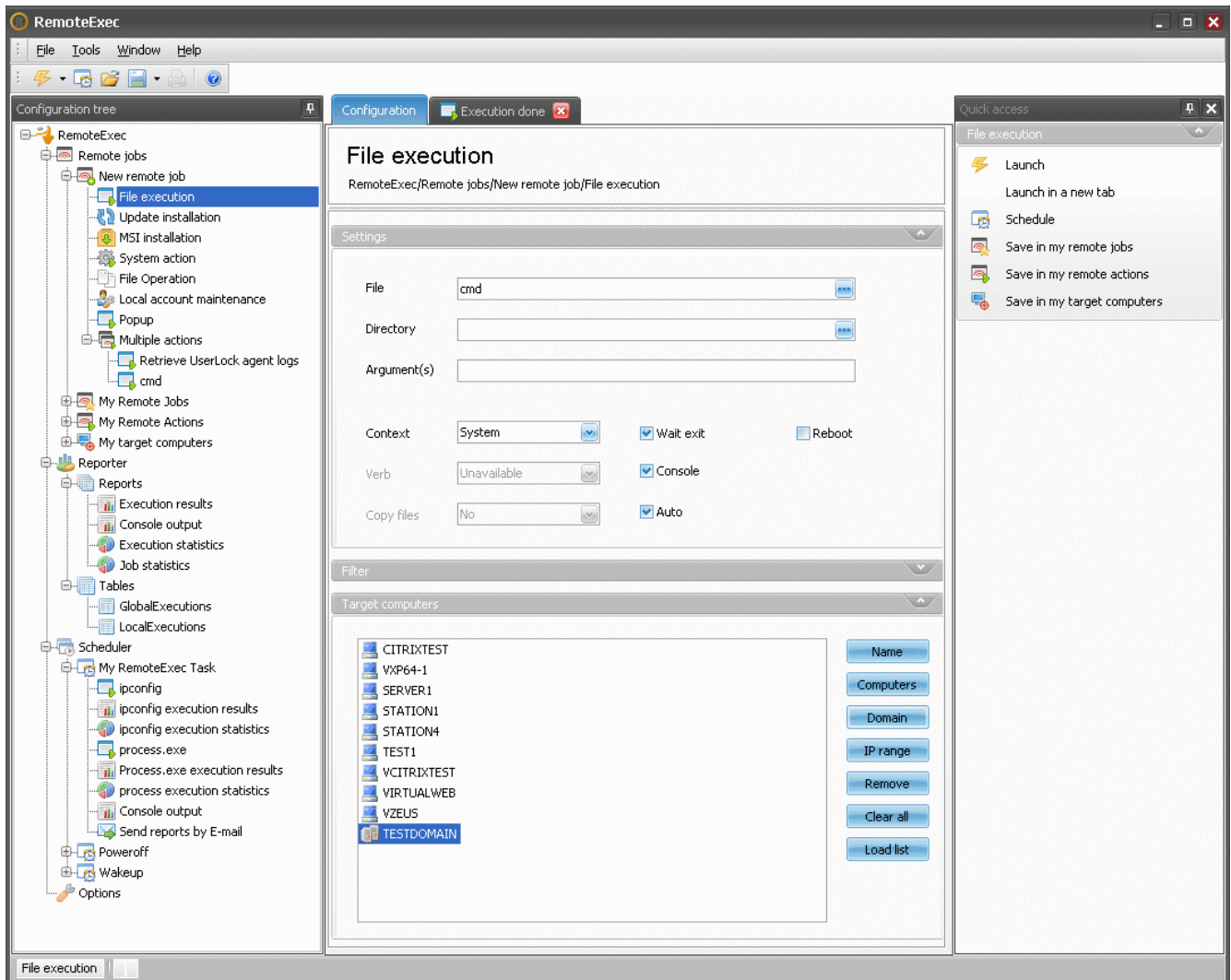


Figure 1 - New RemoteExec interface with tabs and the Configuration tree

- All types of remote actions to execute and reports to display can be selected through the *Configuration tree*.
- When you launch a remote execution or display a report a **new tab is opened**.

For additional information, please contact IS Decisions at one of the following:

1.2. Remote Actions

- **The definition of a Remote Action is:** what you want to remotely execute but without the list of target computers.
- Ability to save Remote Action configurations in a favorite folder (**My Remote Actions**) in order to use them again quickly **with different target computers**. For example to do on demand deployment.

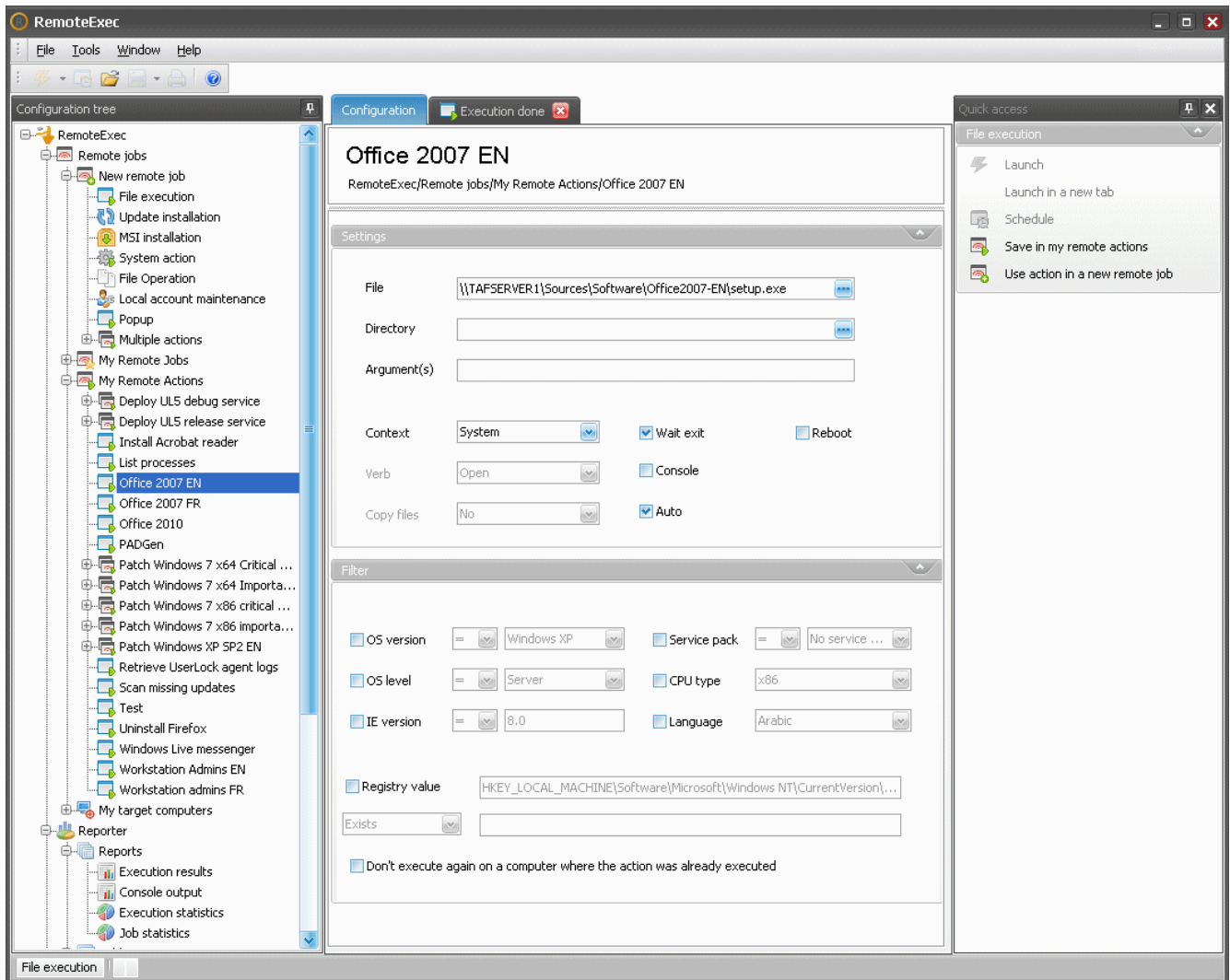


Figure 2 - A Remote Action saved in the favorite folder

For additional information, please contact IS Decisions at one of the following:

1.3. Remote Jobs

- **The definition of a Remote Job is:** a Remote Action plus all target computers on which you want to execute the action.
- Ability to save Remote Job configurations in a favorite folder (**My Remote Jobs**) in order to execute them again easily.
- A Remote Job can be configured with the Filter option “Don't execute again on a computer where the action was already executed” so you will be able to **easily start new execution attempts** for computers unavailable during previous attempts.

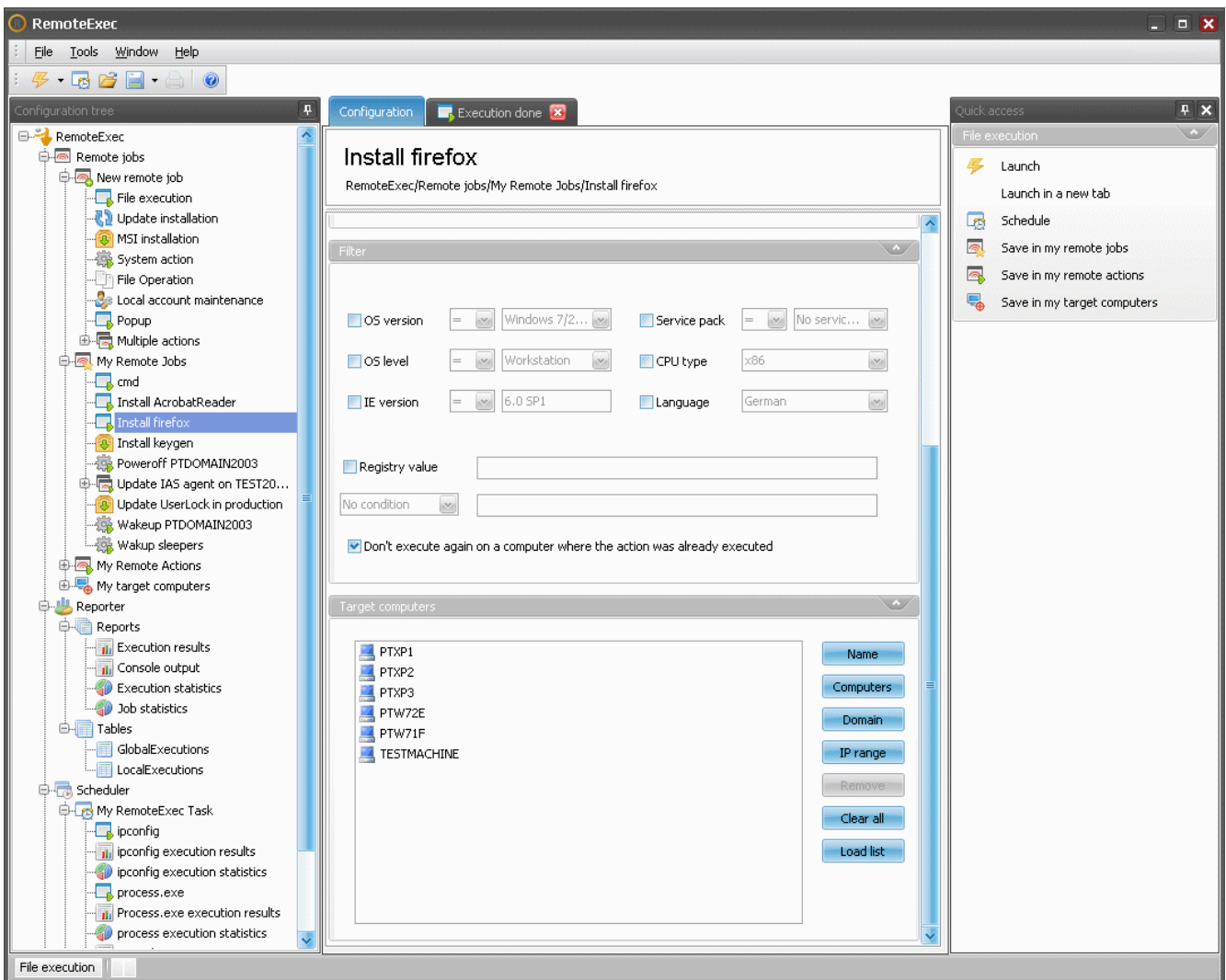


Figure 3 - A Remote Job saved in the favorite folder

For additional information, please contact IS Decisions at one of the following:

1.4. Target Computers

- Ability to save predefined lists of *Target Computers (My Target Computers)* in order to use them quickly again with new or saved *Remote Actions*.

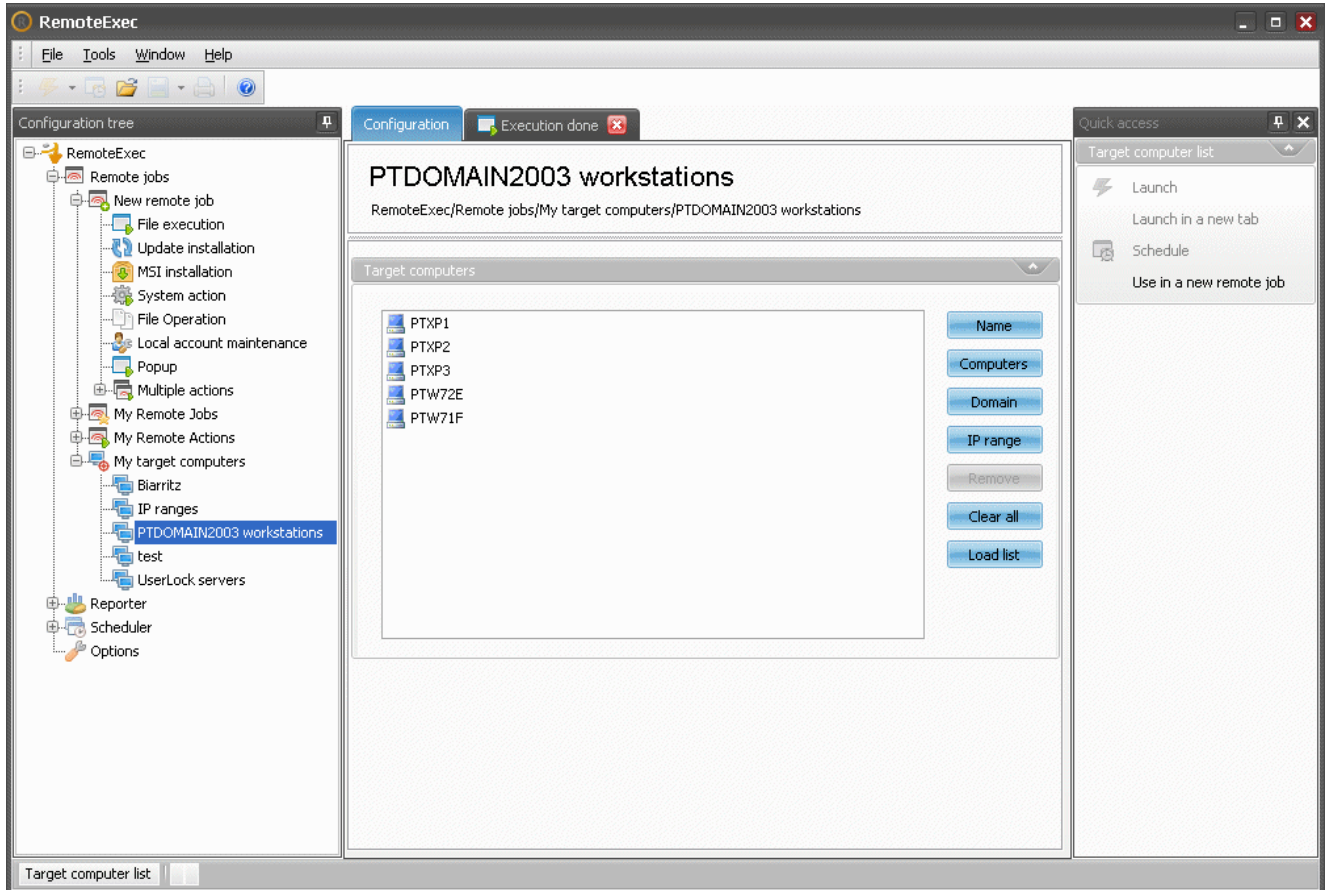


Figure 4 - A Target Computer list saved in the favorite folder

For additional information, please contact IS Decisions at one of the following:

1.5. Remote executions

- When a remote execution is started **you can follow it** in the progress window.

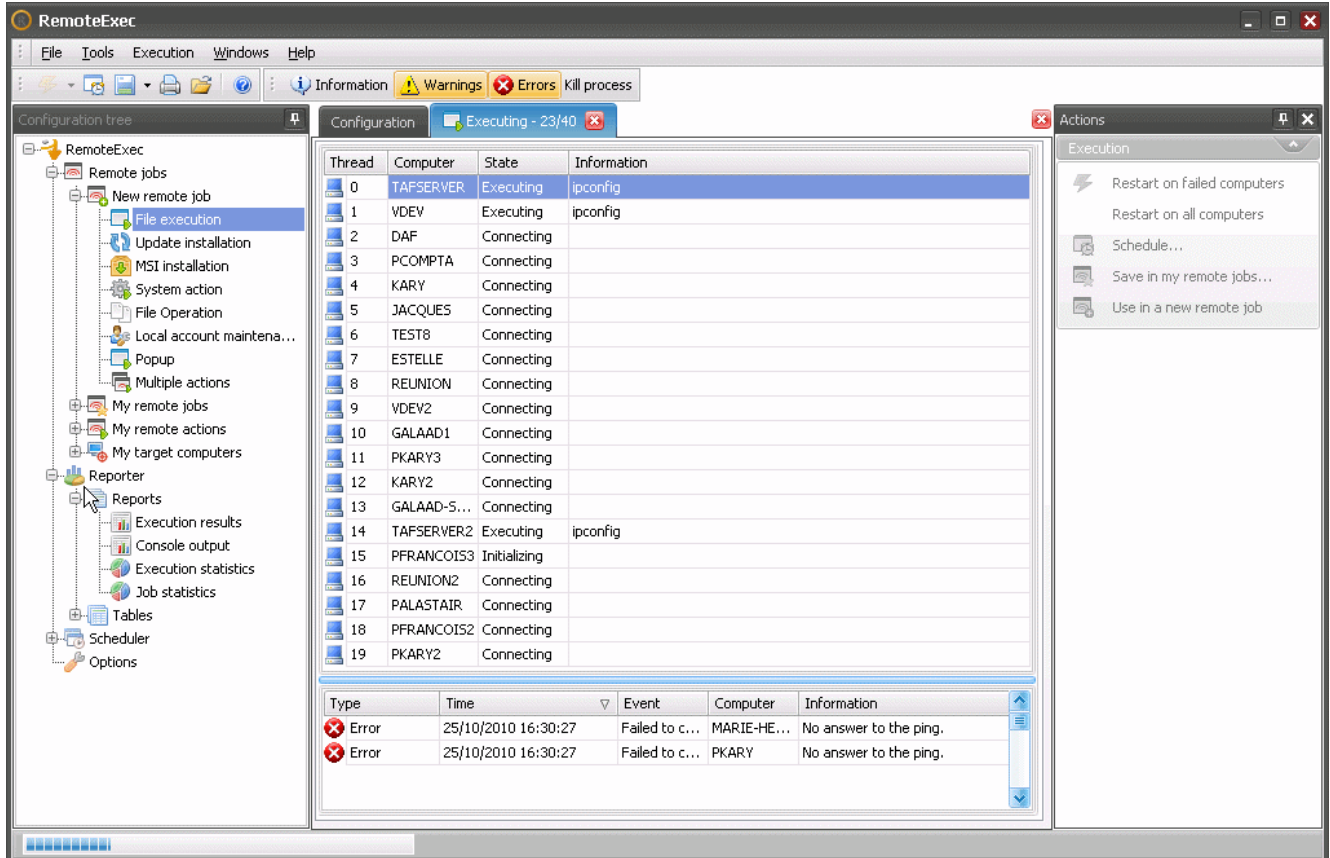


Figure 5 - A remote execution in the progress window

- Once the execution is done, **a new attempt can be restarted immediately** for failed computers or a new attempt **can be scheduled**. You can even save the configuration in your saved *Remote Jobs*.

2. Reporting

- Ability to display a **pie chart** for a *Job* in order to know how many computers have successfully executed the action and how many computers failed to execute the action.

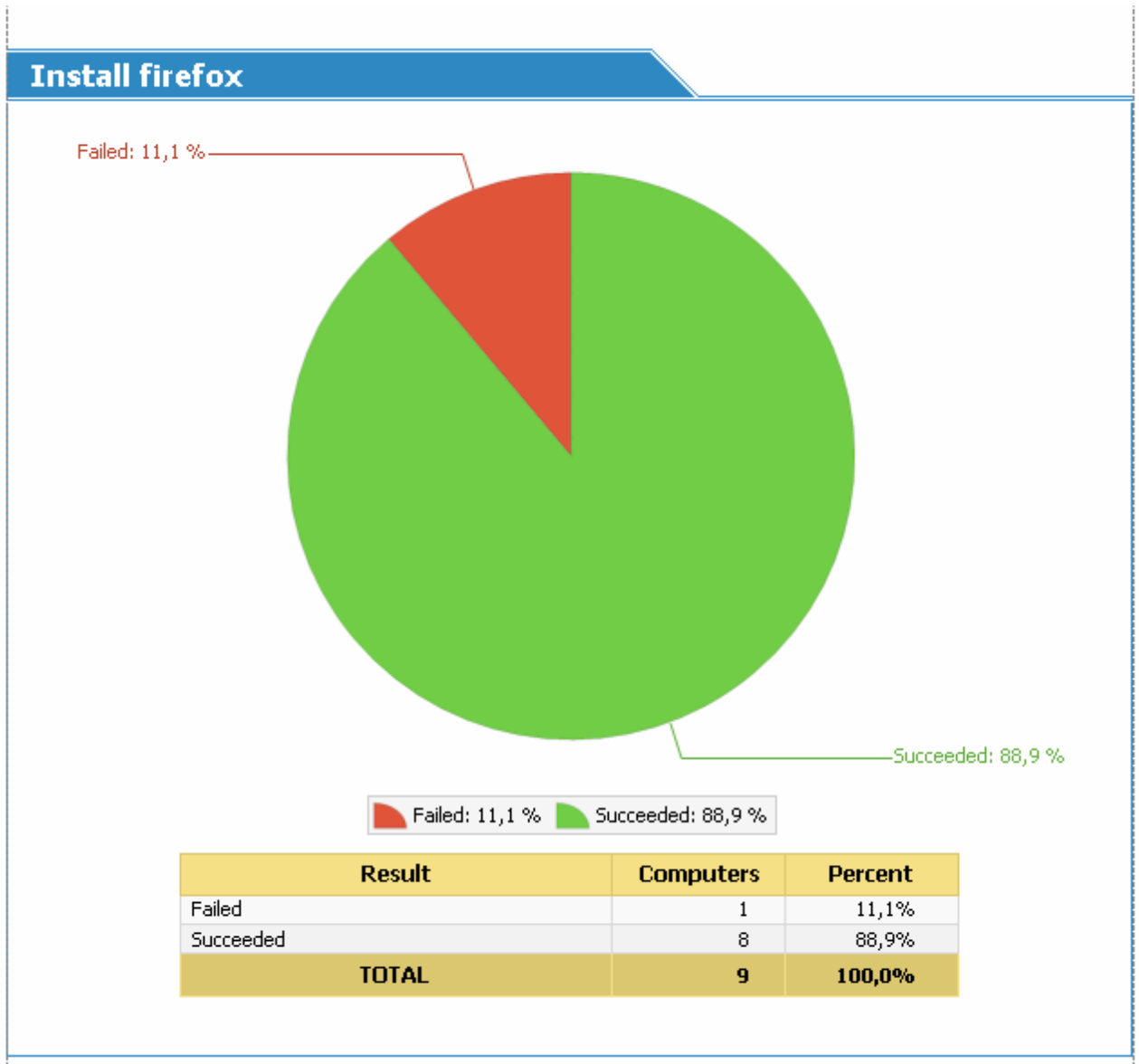


Figure 6 - Execution statistics report for a *Remote Job*

For additional information, please contact IS Decisions at one of the following:

- Ability to display a report with the execution status **on all target computers** of a Job.

Event type	Date	Event	Computer	Information
Information	29/10/2010 10:20:53	Done	PTW71F	
Information	29/10/2010 10:20:51	Done	PTW72E	
Information	29/10/2010 10:20:56	Done	PTXP1	
Information	29/10/2010 10:20:55	Done	PTXP2	
Information	29/10/2010 10:20:53	Done	PTXP3	
Error	29/10/2010 10:20:43	Failed to connect	TESTMACHINE	Unable to resolve the name

Figure 7 - Remote execution result report

- Ability to display the **console text output** in a printable report.

SERVER1

Windows IP Configuration

Ethernet adapter Local Area Connection:

```

Connection-specific DNS Suffix . :
Link-local IPv6 Address . . . . . : fe80::ad7a:b785:5dac:fe26%10
IPv4 Address. . . . . : 10.1.7.31
Subnet Mask . . . . . : 255.255.0.0
Default Gateway . . . . . : 10.1.1.1
    
```

Tunnel adapter Local Area Connection* 8:

```

Connection-specific DNS Suffix . :
Link-local IPv6 Address . . . . . : fe80::5efe:10.1.7.31%11
Default Gateway . . . . . :
    
```

STATION4

Windows IP Configuration

Ethernet adapter Local Area Connection:

```

Connection-specific DNS Suffix . :
IP Address. . . . . : 10.1.7.39
Subnet Mask . . . . . : 255.255.0.0
Default Gateway . . . . . : 10.1.1.1
    
```

Figure 8 - Output of the console in a report

For additional information, please contact IS Decisions at one of the following:

3. A new type of Remote Action

- Ability to **display a Popup** to users logged on remote computers.

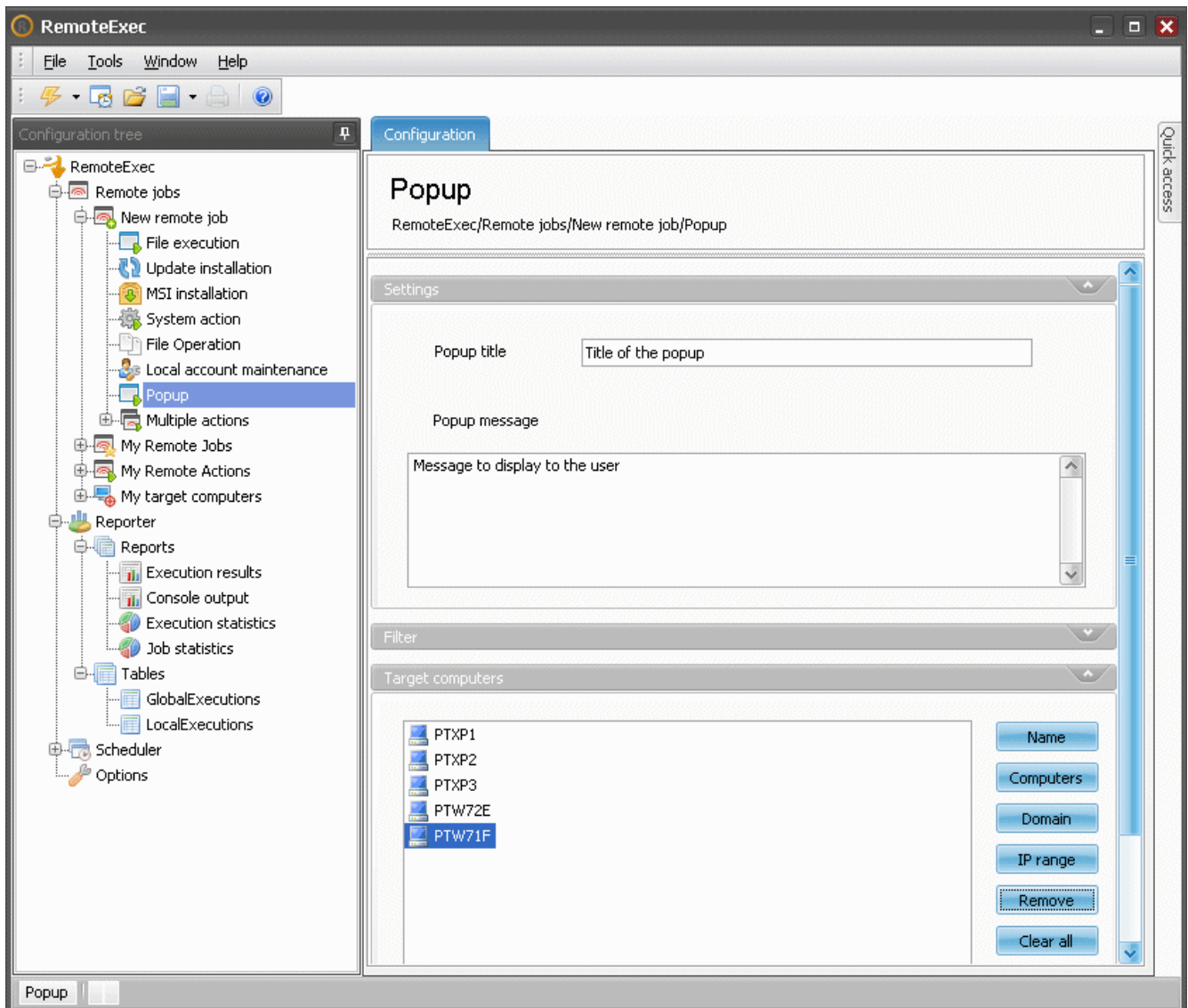


Figure 9 - *Popup* configuration



Figure 10 - *Popup* displayed to the user logged on the remote computer

For additional information, please contact IS Decisions at one of the following:

4. Scheduler

- A *Job* can be scheduled in order to **automate the execution**.
- Several *Remote Jobs* can be included in the same *Scheduled Task*.
- After a scheduled execution a report **can be automatically generated and sent by E-mail**.

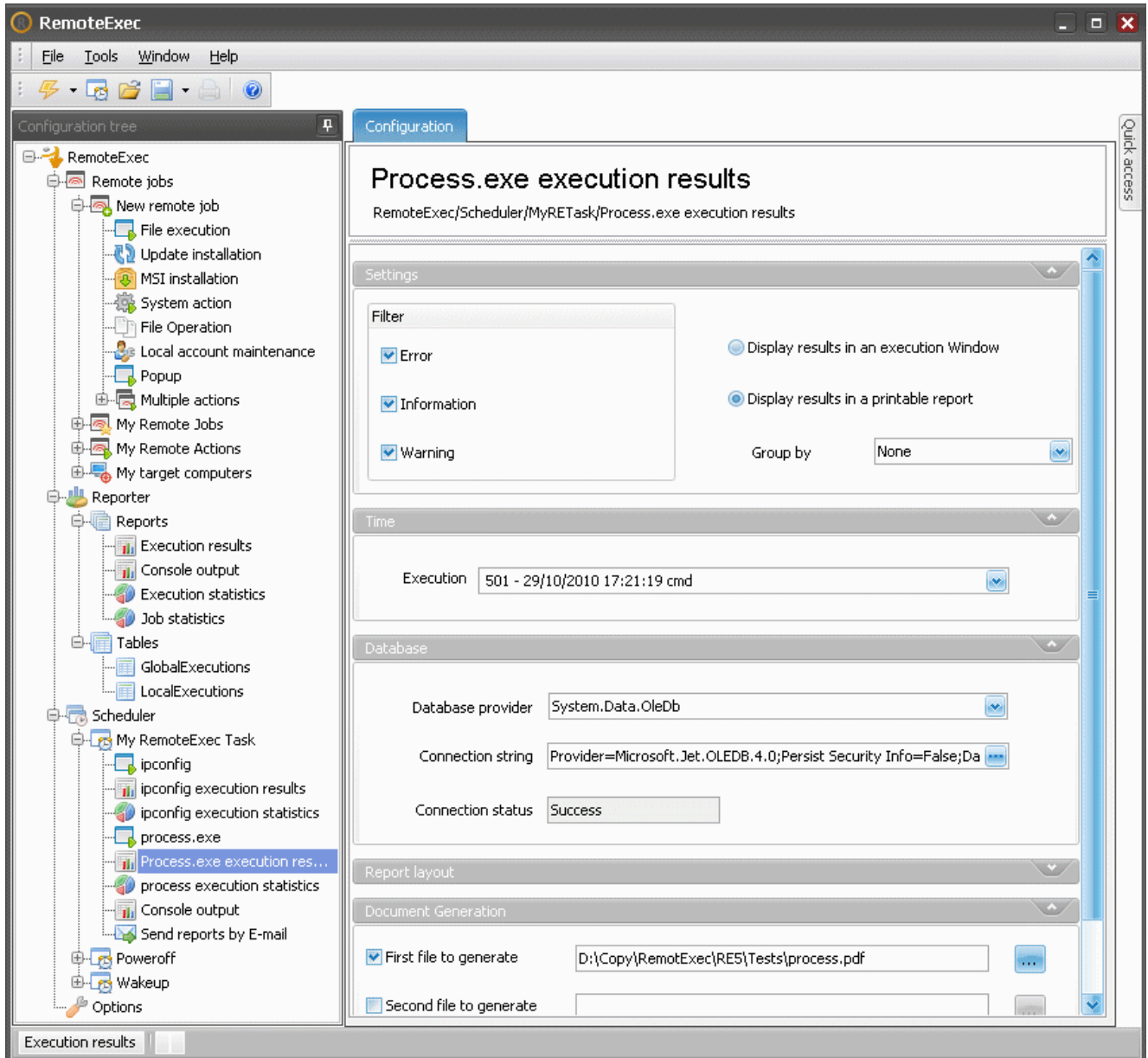


Figure 11 - Generation of a report in a PDF file after a remote execution in a *Scheduled Task*

For additional information, please contact IS Decisions at one of the following:

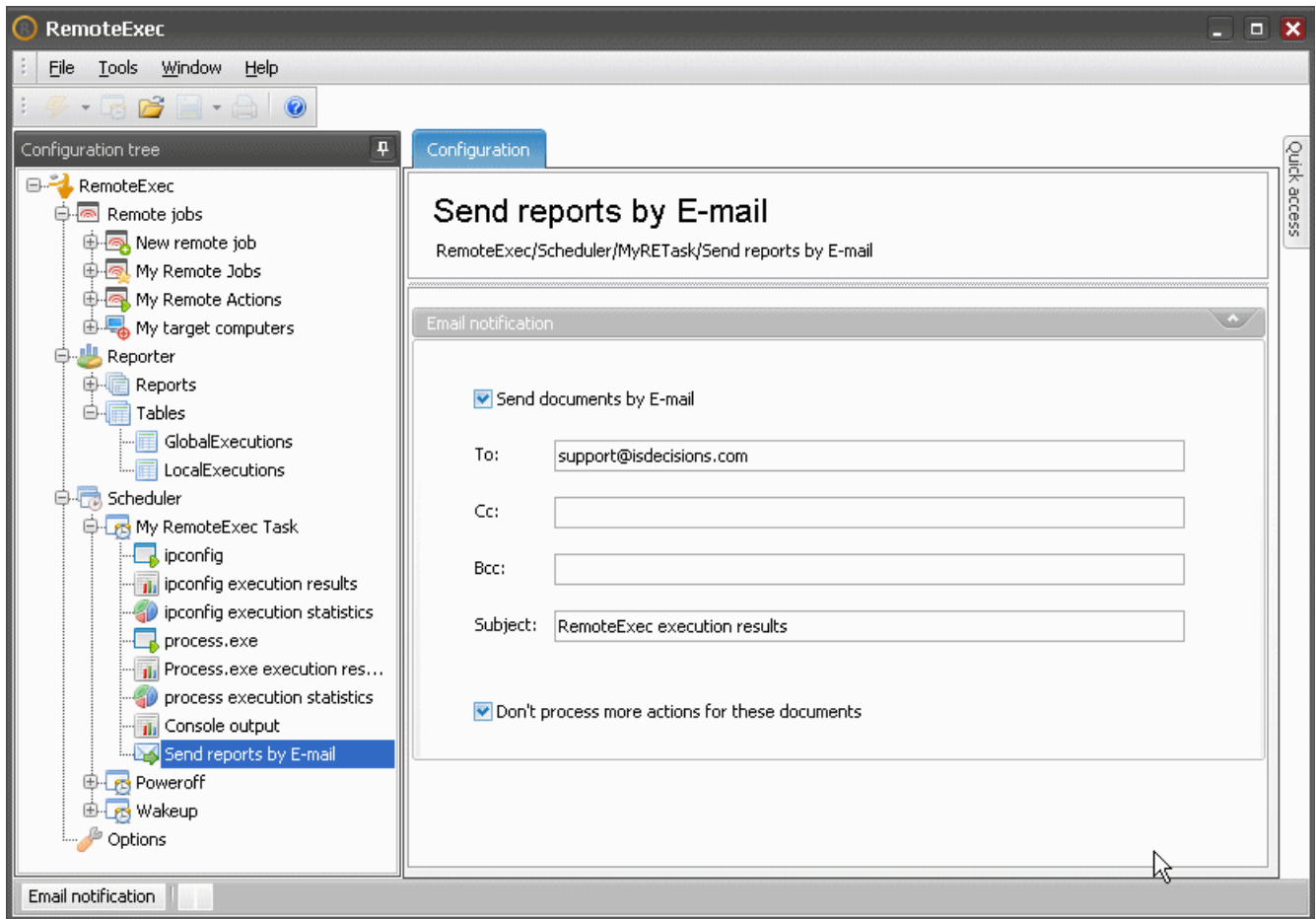


Figure 12 - Send reports generated during the *Scheduled Task* by email

For additional information, please contact IS Decisions at one of the following:

5. Internals

- **Logs are inserted in a database** in order to keep the execution history. By default an MS access database is used but a SQL server database can also be used.
- **The new RemoteExec execution engine is more firewall friendly** and no longer uses *RPC and DCOM*. Only *ICMP* (ping) and *Microsoft file and printing sharing (SMB TCP 445)* are required.
- **The communication is encrypted** except for file transfers, remote registry access and redirected console input and output.

For additional information, please contact IS Decisions at one of the following: