

UserLock Getting Started Guide

For additional information, please contact IS Decisions at one of the following:

 **+335.59.41.42.20**
Phone

 **+335.59.41.42.21**
Fax

 **www.isdecisions.com**
Web

 **info@isdecisions.com**
Email

Table Of Contents

1. Install the userlock server	3
2. Deploy the agent.....	4
3. Check user sessions.....	5
4. Configure userlock.....	6
5. Check the protection.....	8
6. Userlock is ready	9

For additional information, please contact IS Decisions at one of the following:

 **+335.59.41.42.20**
Phone

 **+335.59.41.42.21**
Fax

 **www.isdecisions.com**
Web

 **info@isdecisions.com**
Email

1. Install the UserLock server

The first thing to do is to install the *UserLock primary server* on the network zone you want to protect. To do this you just need to launch a standard installation using the UserLock install package.

Name of the install package: *UserLock_x86.exe*
You can download this install package [here](#).

The primary server can be installed on a domain controller or on a simple server belonging to a domain.

At the end of the installation the *UserLock service configuration wizard* starts automatically:

- Click *Next* on the welcome page.
- Select Primary server as server type and click *Next*.
- Select the zone you want to protect and click *Next*. The zone can be: all domains with trust relationships, a single domain or an organizational unit in a domain.
- Select a service account with administrative rights on this server and on all workstations of the zone and click *Next*.
- At the end of the wizard the UserLock service is automatically configured and started.
- When you exit the wizard the UserLock administration console is automatically opened.

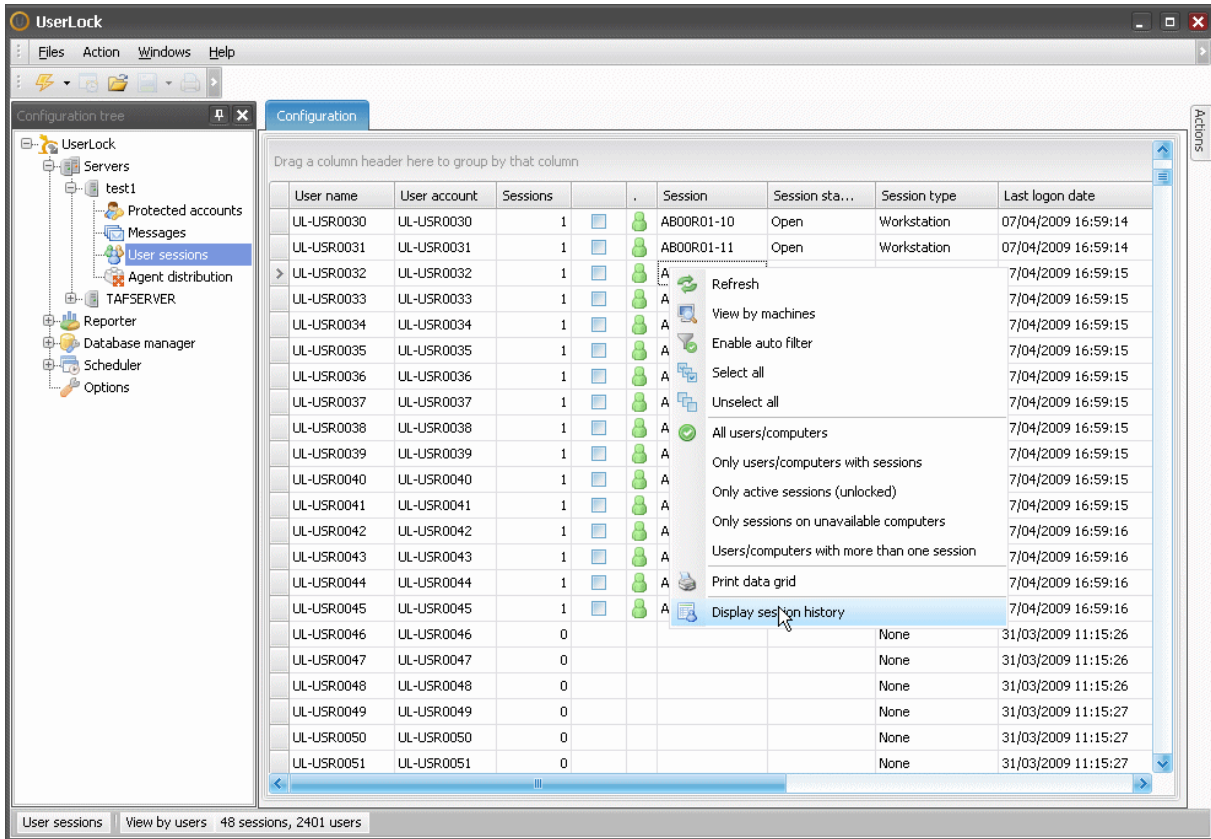
Next step: Deploy the agent.

For additional information, please contact IS Decisions at one of the following:

3. Check user sessions

To make sure that UserLock works correctly, you can logon on a workstation where an agent is previously installed, get back to the UserLock administration console and click on *User sessions* in order to inspect that the newly opened session is displayed here.

You can also display the session history for a specific user with the context menu.



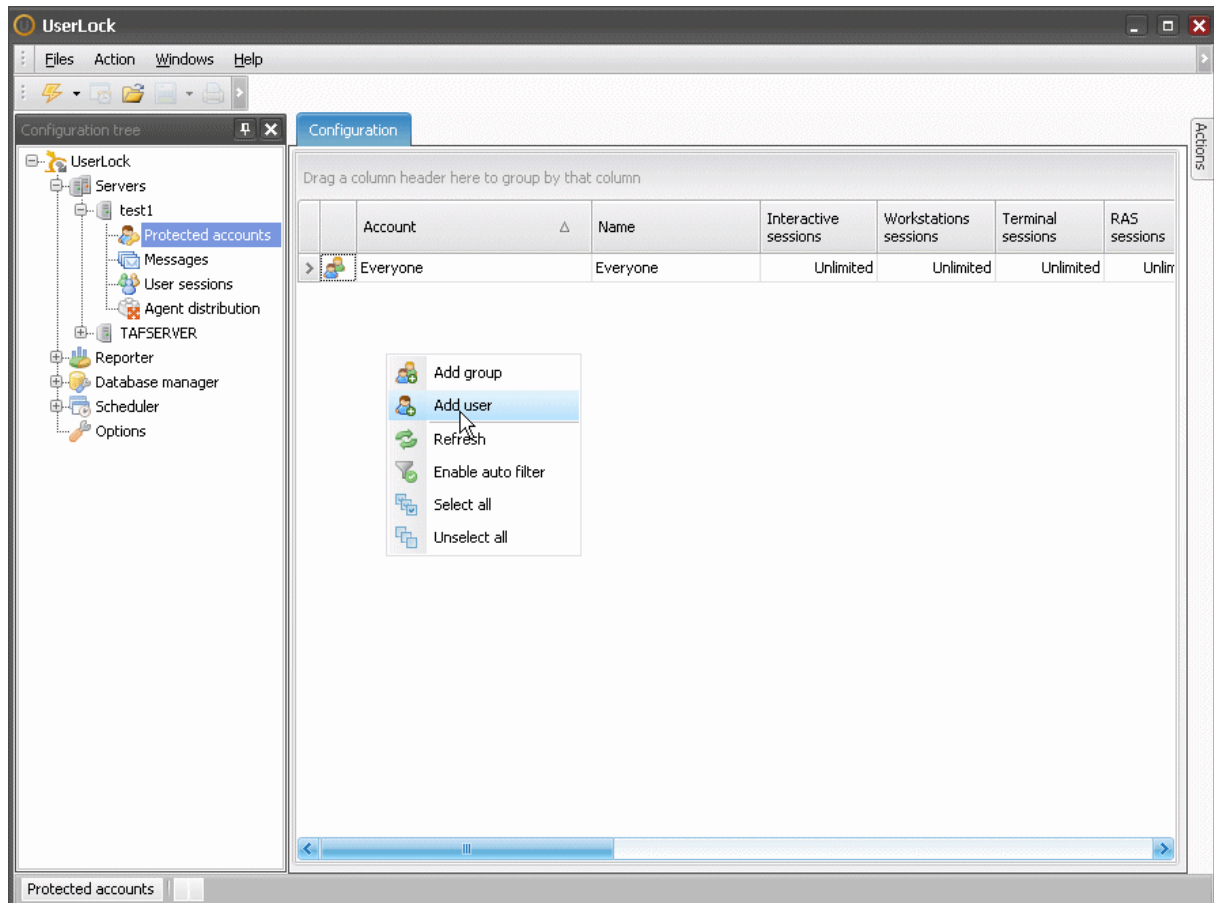
Next step: Configure UserLock.

For additional information, please contact IS Decisions at one of the following:

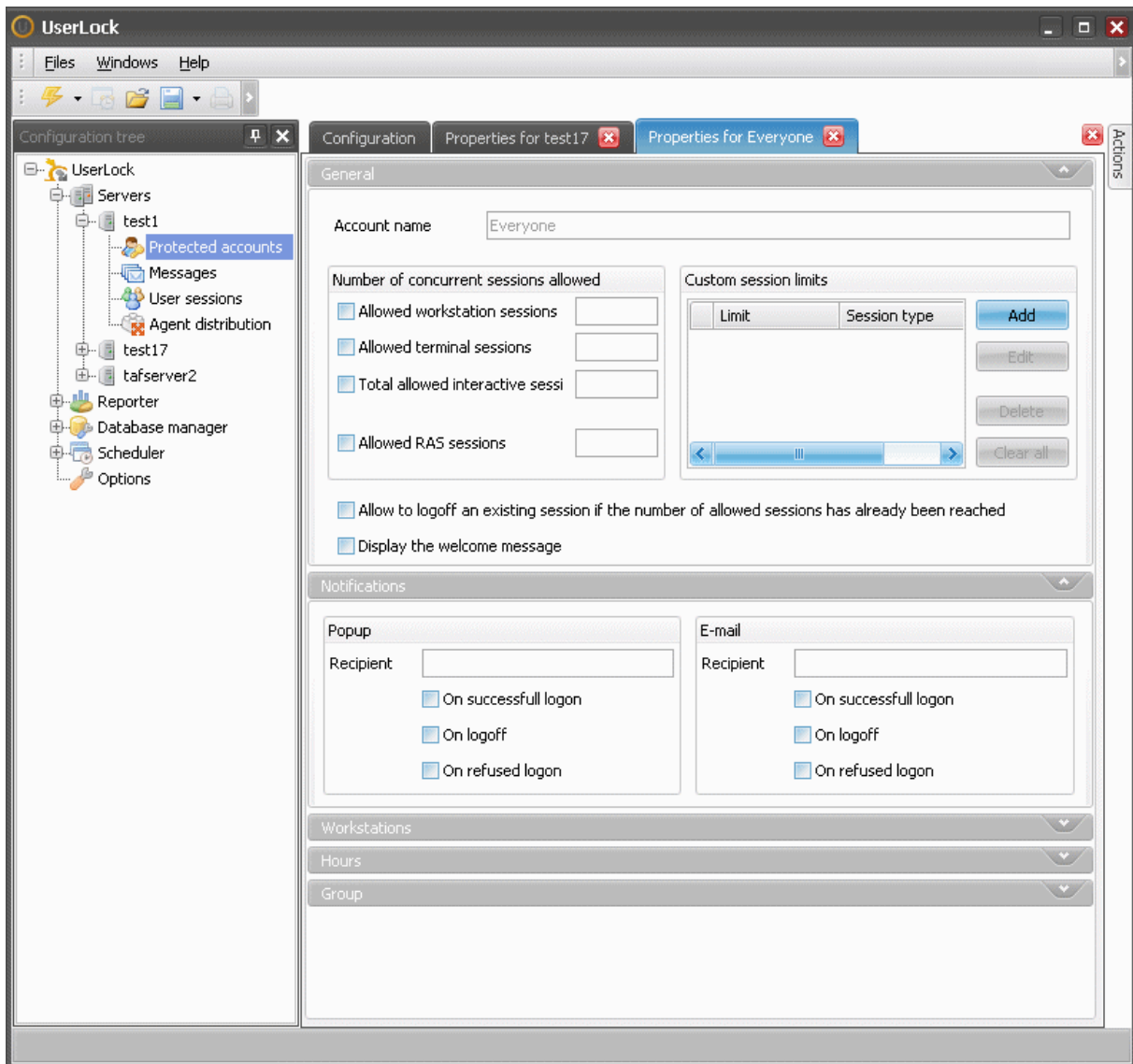
4. Configure UserLock

At this step in order to limit simultaneous user sessions you just need to:

- In the UserLock administration console go in *Protected accounts*.
- In the context menu click on *New group* or *New user*.
- Configure the group or the user for only one simultaneous session (*Total allowed interactive sessions*).
- Click *OK*.



For additional information, please contact IS Decisions at one of the following:



Next step: Check the protection.

For additional information, please contact IS Decisions at one of the following:

 **+335.59.41.42.20**
Phone

 **+335.59.41.42.21**
Fax

 **www.isdecisions.com**
Web

 **info@isdecisions.com**
Email

5. Check the protection

You can try simultaneous logons on workstations on which the agent has been installed (using the user account previously configured) and you should not be able to open a second session.

Next step: UserLock is ready.

For additional information, please contact IS Decisions at one of the following:

 **+335.59.41.42.20**
Phone

 **+335.59.41.42.21**
Fax

 **www.isdecisions.com**
Web

 **info@isdecisions.com**
Email

6. UserLock is ready

If every previous steps succeeded, it's time to deploy the agent on all your workstations or terminal servers manually or using the automatic mode of the UserLock deployer. You can set it through the *Agent distribution* scope item in the administration console.

You can also install a UserLock *backup server* (optional): UserLock will be able to protect your network even if the *primary server* is down.

UserLock is now ready to work!

Important! If you want to test the evaluation version of UserLock on your whole production environment, you can ask us for an evaluation key at info@isdecisions.com in order to avoid displaying the evaluation message to your users.

For additional information, please contact IS Decisions at one of the following: