

FileAudit[®]
Getting Started Guide
Version 3

www.isdecisions.com

Table Of Contents

1. Requirements.....	3
2. Install FileAudit.....	3
3. Configure a folder to audit.....	4
4. Display accesses.....	6
5. Display a report	7



1. Requirements

- For the computer running *FileAudit*:
Operating system: Windows 2000/XP/2003/Vista/2008/7/2008 R2

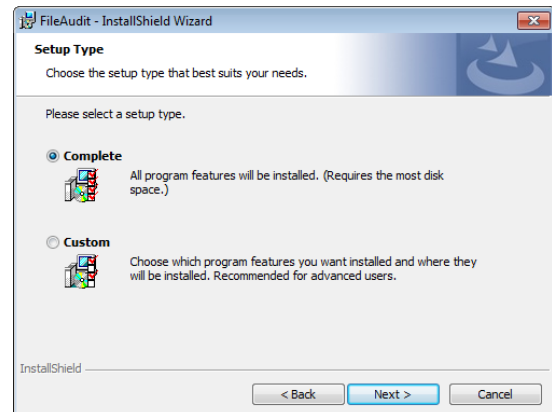
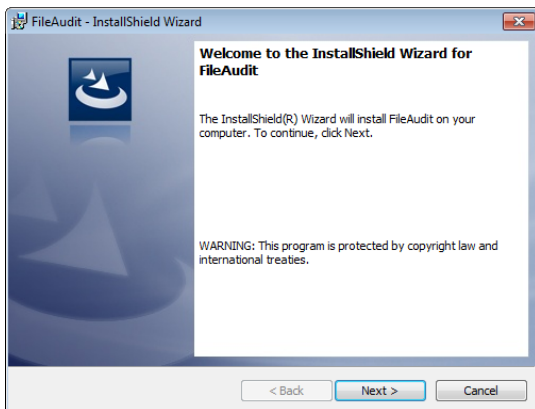
- For computers being audited:
Operating system: Windows 2000/XP/2003/Vista/2008/7/2008 R2
File system: NTFS

2. Install FileAudit

You can download the installation package from our [Web site](#).
Name of the file package: FileAudit_x86.exe

The package is the same for *English* and *French* language and is compatible with 32 and 64 bit platforms. As *FileAudit* can monitor the file accesses remotely, it is not required to install *FileAudit* on the server where the target files and folders are stored. You can choose a workstation and set the audit remotely.

The installation process is very easy. After having chosen your preferred language (*English* or *French*), you will have to follow the instructions displayed: validate the *License Agreement*, type *User information* (optional), keep the "Complete" installation mode and validate by clicking on "Install".



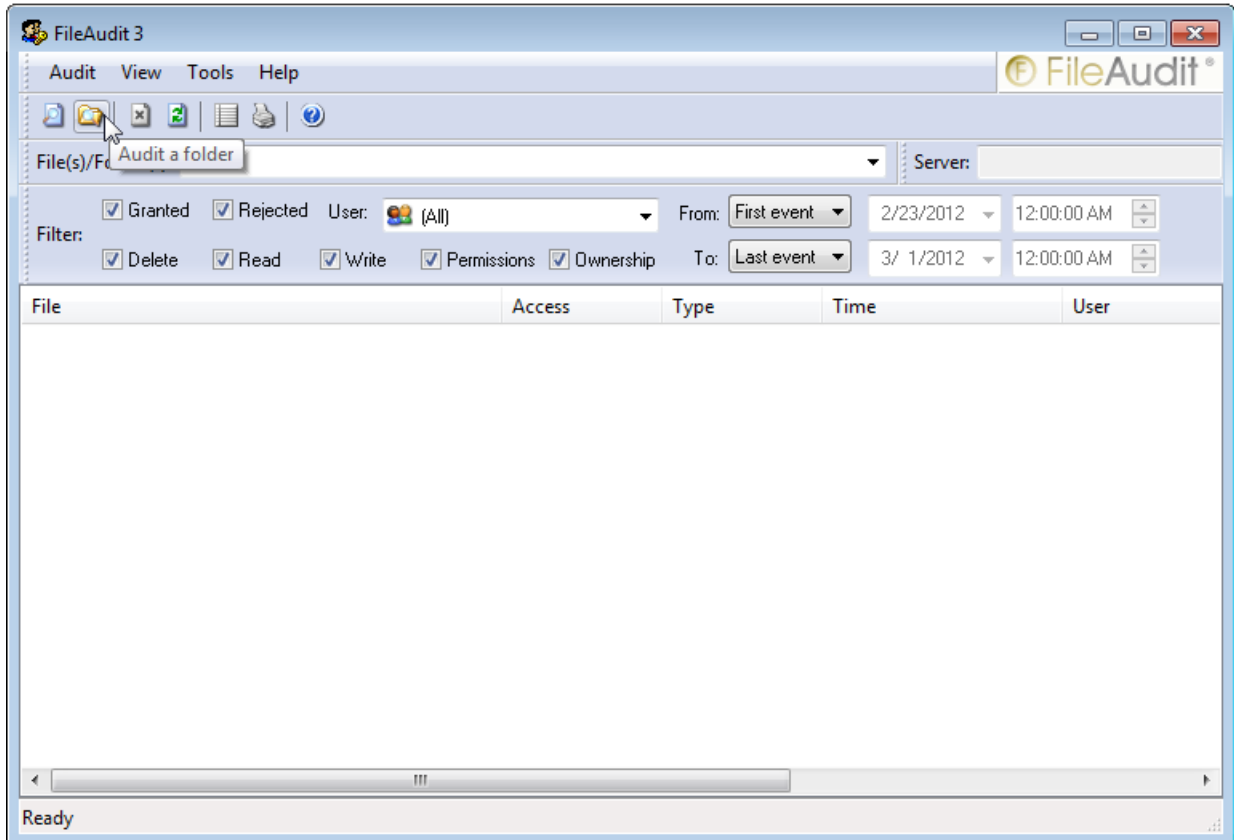
Take note that: *FileAudit* provides a free database based on the *Microsoft Access* model. This database is limited by design to a maximum size of 2 GB. This is quite sufficient for your evaluation. We recommend you to use a *Microsoft SQL Server* database (unlimited size) or a *Microsoft SQL Express 2008 R2* database (limit of 10 GB) in your production environment.



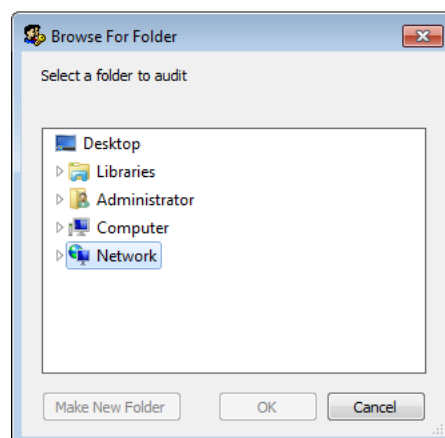
3. Configure a folder to audit

To launch the *FileAudit Console*, click on the *Start menu/All programs/FileAudit*.

You can set a folder to audit through the menu *Audit/Audit a folder* or by directly clicking on the “*Audit a folder*” icon in the tools bar.



A browser window will open allowing you to select the folder you want to monitor.

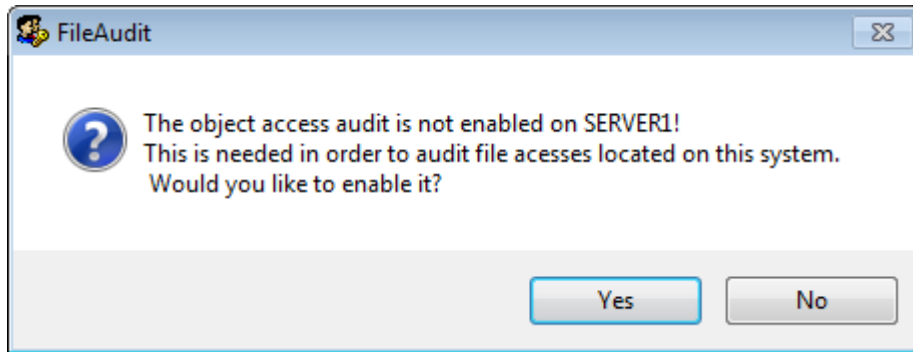


Take note that: You can also directly launch the console by right-clicking directly on a file or folder to audit in the explorer and select *FileAudit* in the *context menu*. In this case, the previous steps are skipped as the file/folder path is directly imported into *FileAudit Console*.

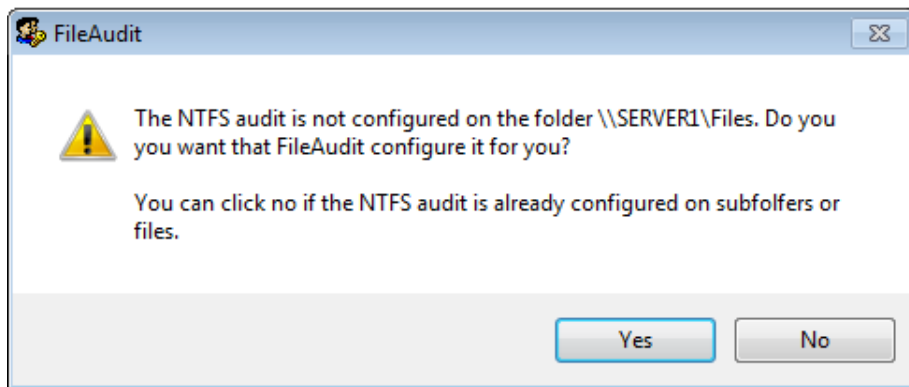


Select the folder you want and click on "OK". *FileAudit* will check the audit settings on the target machine and will configure it automatically. During this process, you may be prompted to validate its action.

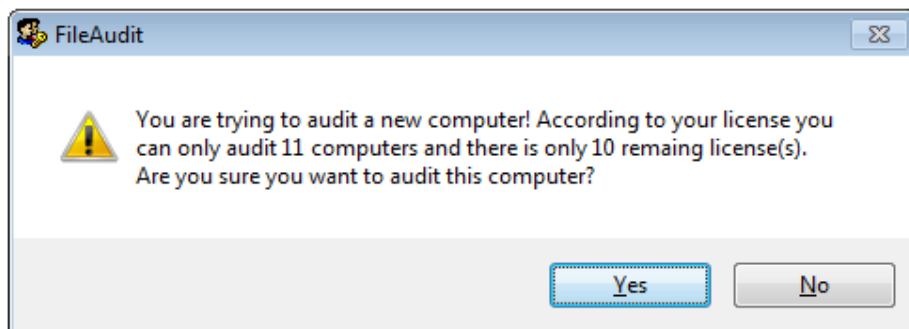
- If the *Object access audit* is not enabled on the computer where files to audit are located, *FileAudit* will propose you to enable it. Just click "Yes".



- If the *Audit settings* are not configured on the files/folders you've selected, *FileAudit* will also propose to automatically do it for you. Just click "Yes".



- At this time *FileAudit* will also warn you that auditing these files will use a new computer license. Just click "Yes". This warning is displayed each time you are trying to audit files on a new computer.

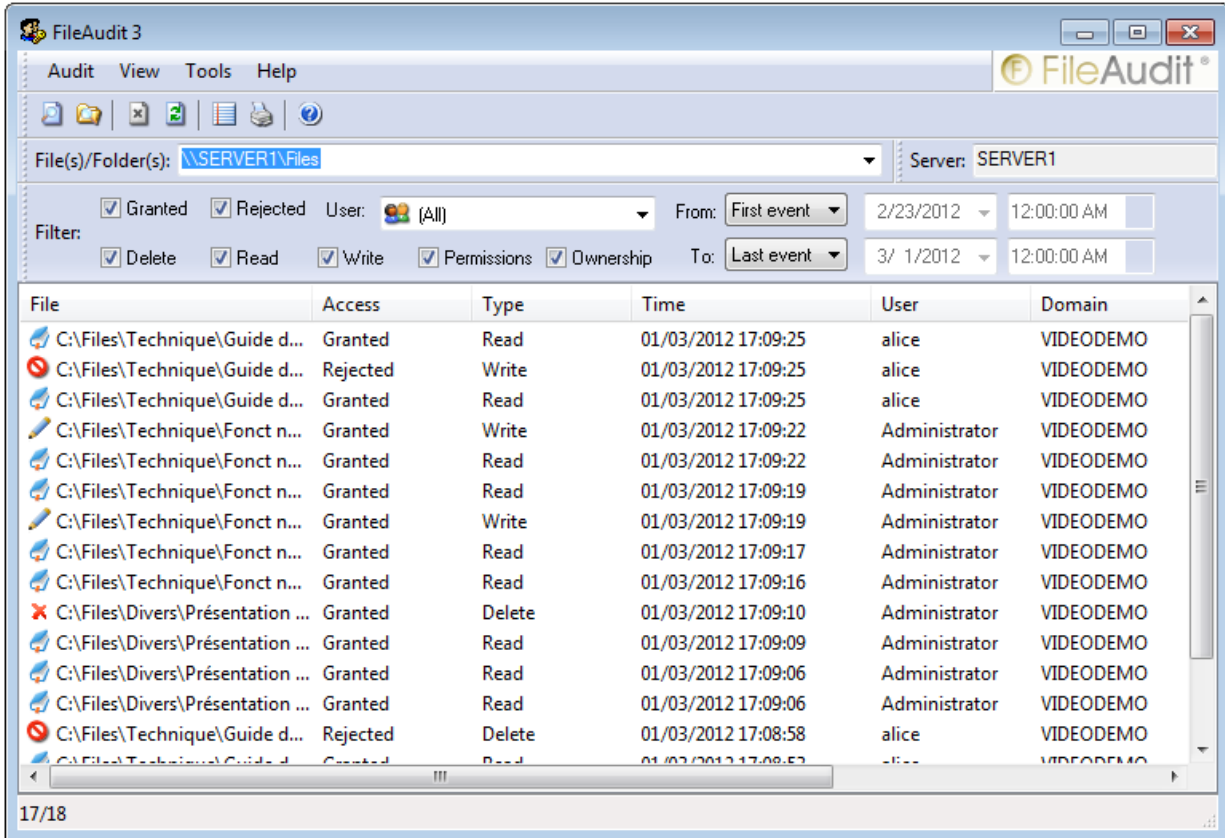


Take note that the evaluation version allows you to audit two computers.



4. Display Accesses

FileAudit is now configured to audit the folder you have selected. You can access this folder and check the results in the *FileAudit Console*. Once you have generated file accesses, click on "Refresh".



5. Display a Report

If you want to print the file accesses you can click on *Report* in the *Audit menu* or in the toolbar icon. A printable version of the file accesses will be displayed. You can then print the report or export it in different format (PDF, HTML, XLS, RTF, etc.).

The screenshot shows a window titled "FileAudit report" with a toolbar containing "Export...", "Print...", and other icons. The main content area displays the "isdecisions" logo and the text "Windows® Systems: Know, Control, Act.™". Below this is the title "Files access report".

Report period: from 03/01/2012 17:08:29 to 03/01/2012 17:09:25

User Name: (All) Server Name: SERVER1
 Access: (All) Access Type: (All)
 Path: \\SERVER1\Files

Time	File	Access	Type	Account	Domain
01/03/2012 17:09:25	C:\Files\Technique\Guide démarrage\FileAudit - GettingStartedGuide EN.doc	Granted	Read	alice	VIDEODEMO
01/03/2012 17:09:25	C:\Files\Technique\Guide démarrage\FileAudit - GettingStartedGuide EN.doc	Denied	Write	alice	VIDEODEMO
01/03/2012 17:09:25	C:\Files\Technique\Guide démarrage\FileAudit - GettingStartedGuide EN.doc	Granted	Read	alice	VIDEODEMO
01/03/2012 17:09:22	C:\Files\Technique\Fonctionnelles versions\UserLock 4.0 new features EN .bt	Granted	Write	Administrator	VIDEODEMO
01/03/2012 17:09:22	C:\Files\Technique\Fonctionnelles versions\UserLock 4.0 new features EN .bt	Granted	Read	Administrator	VIDEODEMO
01/03/2012 17:09:19	C:\Files\Technique\Fonctionnelles versions\Whats new in WinReporter 4 2008.doc	Granted	Read	Administrator	VIDEODEMO

