

A large, stylized green number '4' is the central graphic of the slide. It is composed of a thick green stroke with a white circular cutout in the upper right portion. The number is positioned diagonally across the slide.

WinReporter®

What's new in WinReporter?

Version 4

www.isdecisions.com

Table of Contents

1. New graphical user interface	3
2. Scan scheduling and automated reports sending	4
3. Scan improvements.....	5
3.1. General.....	5
3.2. New scanned information.....	5
3.3. Specific scan improvements	5
4. Reporting improvements.....	6
4.1. General.....	6
4.2. New reports.....	6
4.3. Improved reports.....	6

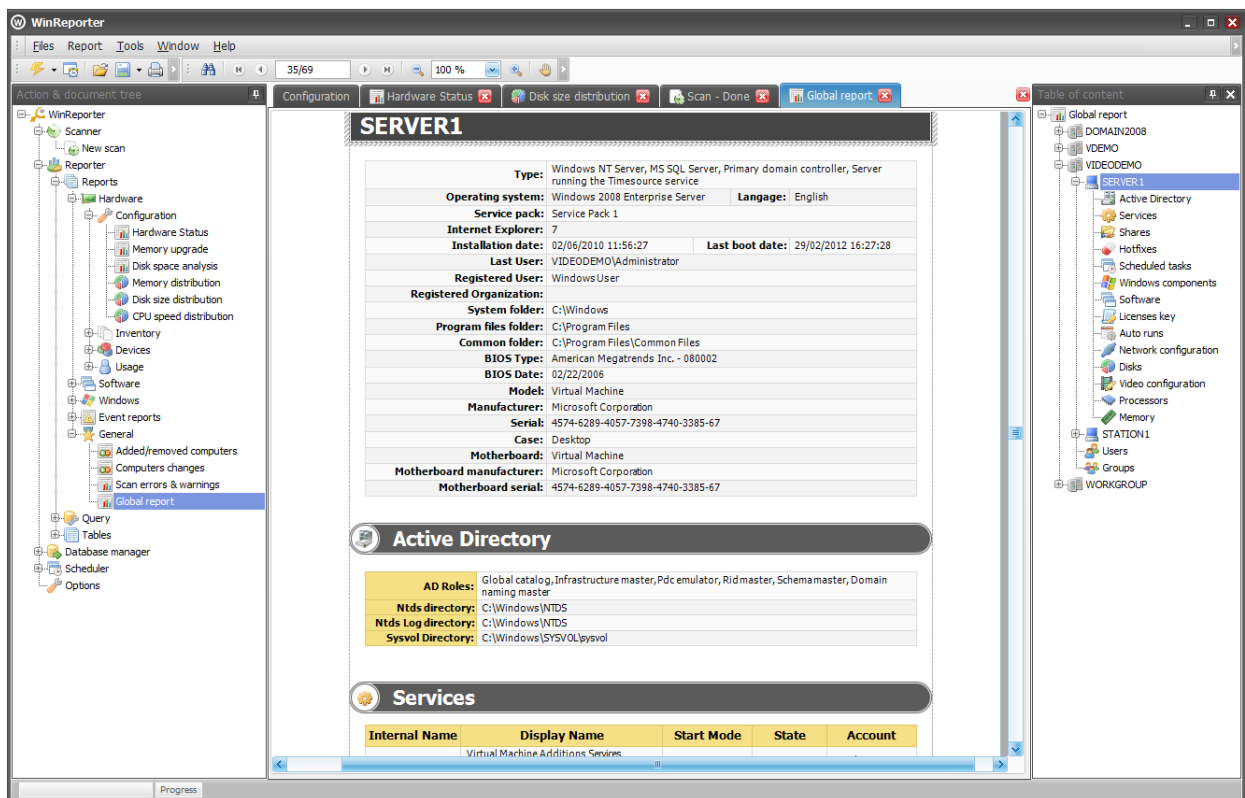


1. New graphical user interface

A **whole new tabbed interface** allowing performing all *WinReporter* tasks from a single location (*Scanner, Reporter, Database Builder, Snapshot Manager, Scheduler*).

Taking advantage of this new interface you can very easily:

- Select an action to be executed or a document to be displayed in the *Action & Document Tree*.
- Configure the action to be executed or the document to be displayed.



You then click on the *Launch Button* in the tool bar and the action execution or the document is displayed in a new tabbed window.

Typically the first action you will configure and launch is a new scan. When the scan is over, you can select a report and display it.



2. Scan scheduling and automated reports sending

Ability to easily **schedule a scan and to automatically generate reports** (*PDF* files) that will be sent to a specific E-mail recipient.

To schedule actions, you will have to:

- Select an action to be executed or a document to be generated in the *Action & Document Tree*.
- Configure the action to be executed or the document to be generated.
- Click on the *Schedule Button* (next to the *Launch Button*).
- Select the name of a new task or of an existing task.

The task is created (if needed) in the *Scheduler* and the action is added to it.

You can then:

- Edit the schedule of the task.
- Add several actions to a task and order their execution (scan first, report next).

For reports to be generated, you need to specify the document to be generated in the last section of the report configuration.

After having set all your reports, you can add a *notification* to the task. This will allow you to send all generated documents to a specific E-mail(s) recipient(s) (the *E-mail settings* need to be set previously in the *Options*).



3. Scan improvements

3.1. General

- The new scanner uses up to **10 times less bandwidth**.
- The scanner is up to **twice as fast** when the information is inserted in a **Microsoft SQL Server** database.
- **Impersonation accounts** are now stored in a central location (secret section of the *registry*) so you don't need to enter them again each time you configure a new scan.

3.2. New scanned information

- **Monitors** (Model, Serial number, size).
- **System slots** with:
 - Type: PCI / PCI Express / ISA,
 - Data width: 32 bits / 16 bits / 16X / 4X / 1X,
 - Current usage: in use / available.
- **License keys** for *Windows & MS Office*.
- **Network drives** (if the user is logged on during the scan, *WinReporter* will also retrieve drive letters and UNC paths).
- **Auto runs**: Programs automatically started when a user opens a session (name, executable path, arguments).
- **Version of Windows components**: *MDAC, Windows Installer, DirectX, .NET framework*.
- **Driver version** for devices.
- **Microprocessor platform**: *x86/x64/ia64*.
- **Windows Edition**: *Business, Ultimate, Enterprise, Datacenter, ...*

3.3. Specific scan improvements

- **Teaming network cards** are now detected as a single card and remote access connections are also scanned (*Windows 2000* systems and above).
- **Hyperthreading** and **multi-core** processors are now scanned.
- Several **event filters** can be now specified in order to only scan events you are interested in. Some predefined are also available.



4. Reporting improvements

4.1. General

- **Event reports** are now also included in the *Reporter*.
- Reporter uses a **new report engine** and all reports have been redesigned.
- Ability to **group** event reports per computer, per users, ...
- Raw data is displayed in a **new data grid** allowing data grouping, sorting and filtering. You can also hide columns and export data into *CSV*, in *Microsoft Excel* and other formats.
- For reports, you can now **display raw data only**, if you are not interested in the printable version and just want to export the result into *Excel* for example.

4.2. New reports

- **Driver version analysis:** groups computers according to the driver version of a specific device.
- **Product version analysis:** groups computers according to the version of a specific software.
- **Folder sizes:** allows searching the largest folders in your network.
- **Windows components version analysis:** groups computers according to the version of a specific *Windows* component (*MDAC/Windows Installer/.NET/...*)
- **Services:** displays services according to their state (running/stopped/...), their start mode (*Automatic/Manual*) and the service account.

4.3. Improved reports

- **Disk space evolution:** The bottom of the chart is always zero in order to have a better idea of the free space evolution; full disk size can optionally be displayed.
- **Windows versions & updates:** ability to filter on platform types (x86/x64/ia64).
- **Sessions history report:** logons denied by *Windows* (e.g. invalid passwords) can now be displayed.
- **Global report:** information related to: License keys, System slots, Auto runs, Network drives, *Windows* components, Devices, has been added. The global report is now displayed much faster.

[Download a fully-functional WinReporter 4.0 Trial Version](#)

